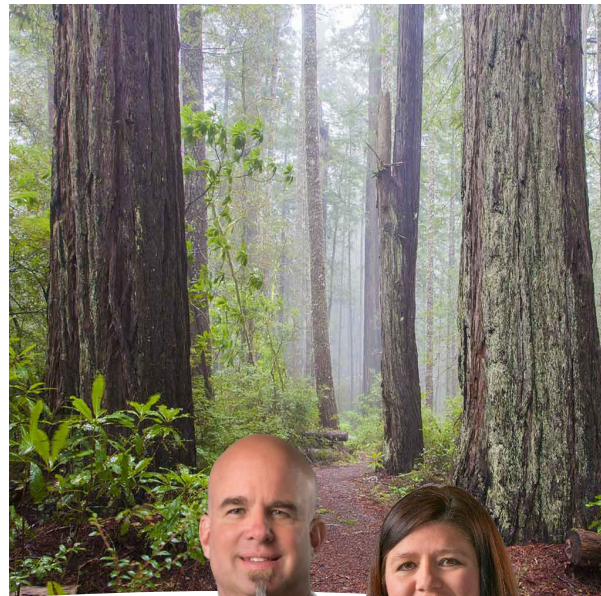


SOUTH COAST REAL ESTATE

RESOURCE GUIDE



Courtesy of:
THE LANGE TEAM | SOUTH COAST REAL ESTATE



DISCOVER ALL THE THINGS THAT MOVE YOU!



SOUTHERN OREGON COAST RESOURCE GUIDE

Brought to you by:

THE LANGE TEAM | SOUTH COAST REAL ESTATE

Michael and Jill Lange, Owners/Brokers/REALTORS®

1310 Easy Street (Corner of Hwy 101 & Easy St.)

P.O. Box 7283

Brookings, OR 97415

www.SouthCoastRE.com

541-254-4088 | 541-254-4045



Welcome to the amazing Southern Oregon Coast that we are so blessed to call home! We are so excited you are here and can't wait to share the beauty this place has to offer.

Brookings sits in the banana belt of the southern coast and when combined with the Chetco Effect, the climate couldn't be better! From the moss-covered forests to the rugged bluffs overlooking the Pacific, if it's the great outdoors you are seeking, you've found it! The region's diverse geography offers a wide variety of recreational opportunities that makes Brookings the place to be.

Those coming to the Southern Oregon Coast embrace a more relaxed lifestyle where they leave the heavy traffic and smog behind. And despite the increase in popularity, Brookings is still considered an affordable place to live and the housing options have allowed just about everyone to find a home that matches their budget, needs and wants.

We created this resource guide for those interested in learning more about the area who are considering making it their home and also for those who have moved here and are in need of assistance getting acquainted with the area. Newcomers can learn about housing, schools, healthcare, dining, recreational activities and more, so they can get settled, connected, and establish their lives and enjoy all the Southern Coast lifestyle has to offer.

If you are considering a move to the Southern Oregon Coast, we are here to assist with the transition. While moving to a new area is exciting and brings new opportunities, we understand the challenges. For the out-of-town buyer, we offer the service of viewing properties, taking multiple photos and even video-conferencing in your absence. It is our goal to assist in all ways possible to ensure the final results are in your best interest.

Whether you're thinking about moving here, or have just made the move, it's safe to say that the Southern Oregon Coastal area is a thriving, desirable region, and might just be your own private paradise. We live here because we love it here, and we're in this business to help you get here too.

Enjoy!

Michael and Jill Lange



ABOUT THE SOUTHERN OREGON COAST

History of Brookings	5
History of Gold Beach.....	7
Location	8
Climate	9
The Chetco Effect.....	10
Population	11
Economy.....	12
Housing Market	14
Property Management.....	20
Property Development	21
Government	22
Public Safety	24
Education	25
Hospitals & Medical Centers	27
Public Services.....	29
Senior Resources	30
Child & Youth Resources	31
Pet & Animal Resources.....	32
Places of Worship	33
Utility Providers.....	34

VISITING THE SOUTHERN OREGON COAST

Welcome Centers &	
Chamber of Commerce	37
Dining in Brookings	38
Dining in Gold Beach.....	41
Easy Living Vacation Rental	43
Motels & Hotels - Brookings.....	44
Campgrounds/RV Parks - Brookings....	45
Motels & Hotels - Gold Beach	46
Campgrounds/RV Parks - Gold Beach	47

EXPLORING THE SOUTHERN OREGON COAST

Recreational Activities.....	49
Calendar of Events	50
Port of Brookings – Harbor	52
Port of Gold Beach	53
Art Galleries	54
Community Parks	55
Family Fun	56
Beaches & State Parks – Brookings	57
Beaches & State Parks - Gold Beach ...	63
Beach Combing & Tide Pooling	66
Biking	67
Camping.....	68
Fishing & Boating.....	69
Golfing	70
Hiking & Walking Trails.....	71
Horseback Riding	73
Lighthouses	74
Museums.....	75
Music	76
Paddle Sports	77
Rivers	78
Surfing	79
Wildlife Viewing	80

REAL ESTATE SERVICES

Meet The Lange Team.....	83
Relocating	84
Investing & Selling Real Estate.....	85
Contact Information	87





LIVING ON THE Southern Oregon Coast



THE HISTORY OF BROOKINGS, OREGON

In 1913, Brookings was born as a redwood-logging company town, parented by the California and Oregon Lumber Company (C&O) and named after one of its founding fathers John Brookings. His brother Robert, who pioneered the Brookings Institution in Washington, D.C., was also involved in the enterprise. It was at Robert's insistence that the planned community included a unifying architectural theme for its major buildings. The designer was prominent California architect Bernard Maybeck.

Through World War I, C&O's sawmill produced high-value lumber from the redwoods of the lower Smith River country, the logs coming north to the mill along the nearly level coastal plain by means of the company's railroad. Almost completely isolated, the town depended on weekly supply boats from the south for mail, groceries and



general merchandise until the construction of the Roosevelt Highway (now highway 101) in the 1920's and 1930's. Stormy weather could delay its arrival for days at a time. In 1920, the population of almost one thousand, clustered at the mouth of the Chetco River.

When C&O terminated its timber operations and closed the mill in 1925, the town fell on hard times and by 1930, the population had declined to 250. A small fishing fleet worked out of Harbor, and in the 1930's, Brookings benefited from the production of Easter lily bulbs, which were grown on the fertile coastal-terrace soils. As late as the 1990's, the area's lily farmers produced well over 90 percent of the world's Easter lily bulb crop.



Following World War II, when truck roads were built into the previously unreachable timber in the rugged mountains east of Brookings, large mills were again built near the town. But it was the building of Highway 101, and the resulting tourist economy, that proved the town's salvation.



FUJITA SWORD - A Gesture of International Peace and Goodwill

Brookings gained national attention in 1962, when organizers of the town's annual Azalea Festival invited former Japanese naval pilot Nobuo Fujita to be the parade's grand marshal. Nobuo Fujita was the only Japanese pilot to bomb the U.S. mainland, dropping incendiary bombs near Brookings in September of 1942 during World War II.

A total of four bombs were dropped over two occasions with the intent of starting forest fires; however, due to damp conditions, little damage occurred.

In 1962, the Brookings Jaycees invited Fujita to Brookings as an occasion of historical significance. During the visit, Fujita donated his Samurai sword, which had flown with him in the cockpit, to the City of Brookings as a gesture of international peace and goodwill.

Fifty years after the bombing, Fujita returned to the forest he once bombed and planted a little redwood tree, which he called a "symbol of friendship and peace."

Fujita was later named an honorary citizen and an ambassador of goodwill by the City of Brookings for his continued peace efforts.



Visiting the Bomb Site

For those with an adventurous spirit, it is possible to visit the bomb site, but it is important to note that the terrain is challenging. From Brookings, take South Bank Chetco River Road to Mt. Emily road. Take Mt. Emily to spur road 260. Parking is at the 1205 and 26 intersections. The trailhead for Trail #1118 is located on the south side of Road 1205, about 200 feet past the intersection. The one-lane road is unpaved and vehicles with all-wheel drive are recommended. Cell phone

service will be limited. Once you have reached the parking area, there is a trail to hike. The trail includes a few large coastal redwood trees. The entire trip will take approximately one hour and fifteen minutes each way. An interpretive display marks the actual site of the bomb's impact.



Commemorative Sites

A commemorative marker is erected inside the Botanical Gardens located at the corner of Chetco Avenue (Route 101) and North Bank Chetco River Road. The Samurai sword is on display at the Chetco Public Library located at 405 Alder Street.



THE HISTORY OF GOLD BEACH, OREGON

The City of Gold Beach received its name after placer miners discovered gold in the sands near the mouth of the Rogue River in 1852. The town, initially named Ellensburg, was incorporated in 1853. Ellensburg was the namesake of Sarah Ellen Tichenor, the daughter of sea captain William Tichenor, who established the coastal town of Port Orford, about thirty miles to the north. In 1858, Ellensburg was named county seat because Port Orford had failed to finance the construction of an adequate courthouse.

On March 25, 1890, the Ellensburg postmaster changed the name of the post office to Gold Beach to avoid confusion with Ellensburg, Washington. "Although the post office at this place has been changed to Gold Beach," the July 10, 1890, *Gold Beach Gazette* reported, "the name of the county seat will continue to be Ellensburg until changed by an act of the legislature." The name of the town and, consequently, the county seat was officially changed to Gold Beach on January 23, 1891.

The supply of gold eventually ran out, and the community subsisted on income from fishing, primarily salmon but also steelhead trout, sea urchins, and shellfish. Salmon fishing reached its peak in 1908, but the size of salmon runs decreased considerably on the Rogue and other Pacific Northwest rivers as a result of overfishing. When commercial fishing ended on the Rogue River in 1935, the town turned to logging as its primary industry. During the 1980s and 1990s, the mills closed as environmental regulations, technology, and the market for timber made milling less profitable. The U.S. Forest Service and the BLM manage the remaining timbered areas in the Rogue River-Siskiyou National Forest.



One of the most notable structures in Gold Beach is the Isaac Lee Patterson Memorial Bridge, also known as the Rogue River Bridge. Highway engineer Conde McCullough designed and built the 1,898-foot-long concrete arch bridge in the early 1930s. It was named a national Historic Civil Engineering Landmark in 1982 and was placed on the National Register of Historic Places in 2005.

The twenty-first-century economy of Gold Beach is based largely on tourism. Vacationers are attracted to the city for its warm summer climate and annual festivals and events, including the Rogue River Salmon Derby Competition and the Clam Chowder Festival.



LOCATION OF BROOKINGS

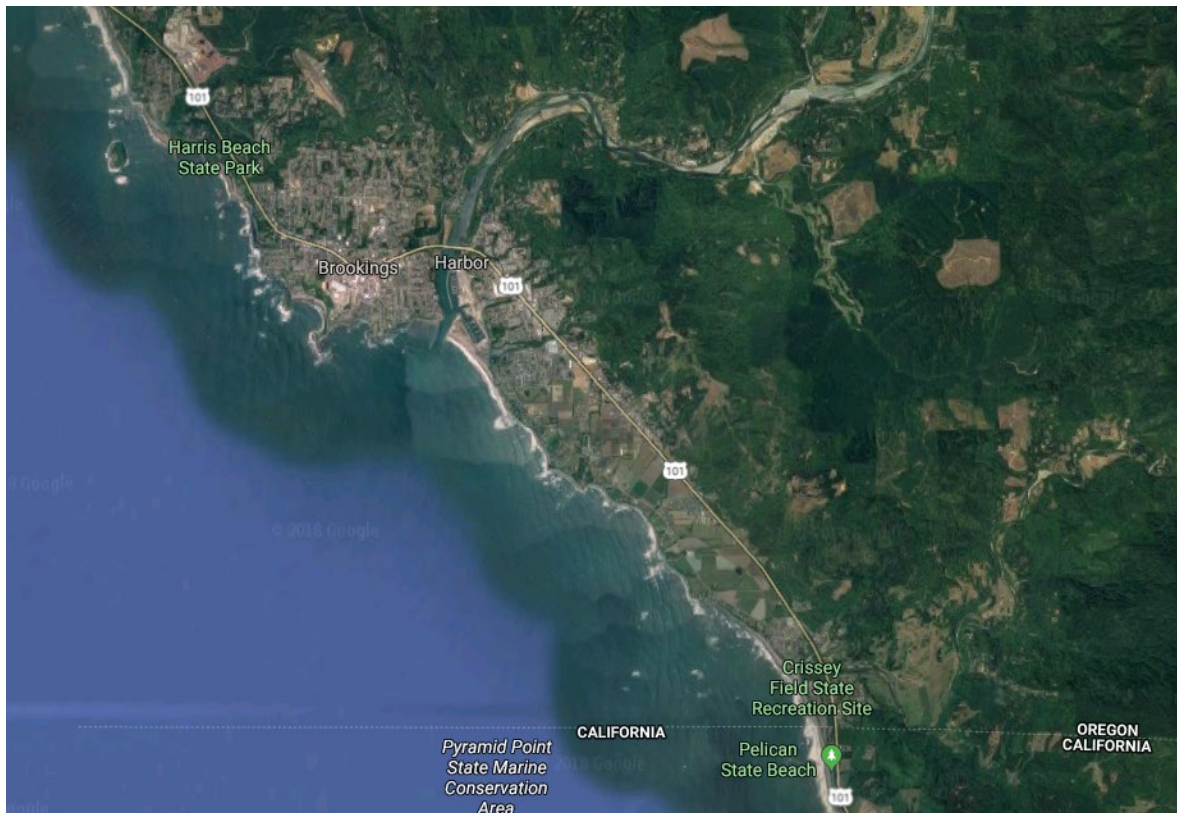
Brookings is situated on Highway 101 (a Pacific Coast Scenic Highway), six miles north of the California state border; 26 miles north of Crescent City, California; and 28 miles south of Gold Beach. Brookings is the southernmost coastal city in the State of Oregon. It is 298 miles from the capital Salem, Oregon.

Located at the mouth of the Chetco River and originally situated exclusively on the north bank of the river, the town's suburbs expanded across the river to include the independent community of Harbor.

Brookings is bordered by the vibrant blue Pacific Ocean to the west; the fir-covered Coastal Range mountains to the east; the meandering Chetco River to the south; and winding scenic vistas to the north. The city limits cover a mere 3.94 square miles; however, Brookings' commercial influence stretches over 500 square miles (considering boundaries that include areas as far north as Port Orford, OR and as far south as Gasquet, CA.) Brookings is the commercial and service hub of the Wild Rivers Coast.

Elevation: 129 feet

Latitude: 42 degrees 3'27' N; Longitude: 124 degrees 17'11' W



BROOKINGS CLIMATE

It's the climate that draws people to Brookings. Moderate winters may include intense rainfall, but snow is rare. Although haze and/or fog are common in the winter months, it is often broken up by weeks of warm, sunny weather.

Mild Summers

Summers are mild and dry with an average rainfall in July and August of less than one inch. Temperatures do not reach extremes at either end of the spectrum. Brookings is occasionally subject to the "Chetco Effect" which brings warmer air flowing into the city throughout the year, allowing daffodils and lilies to bloom year-round. Due to the arced shape of its coastline and its temperate climate, Brookings is affectionately referred to as the "Banana Belt."

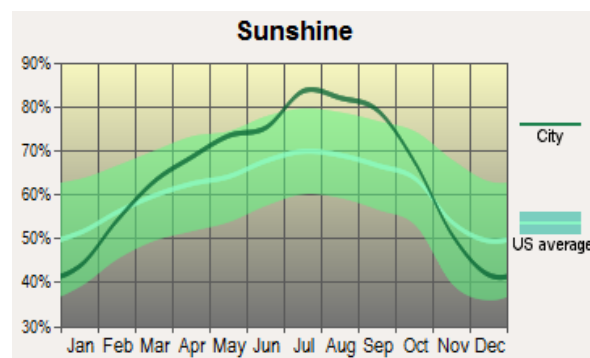
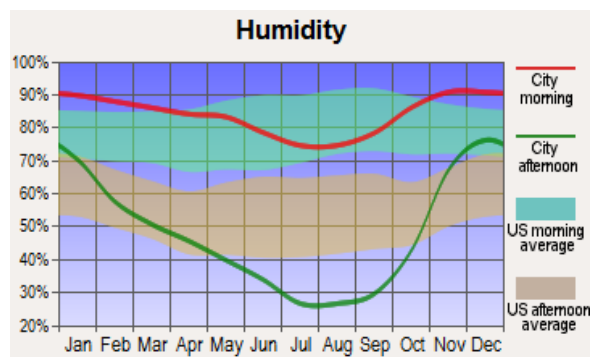
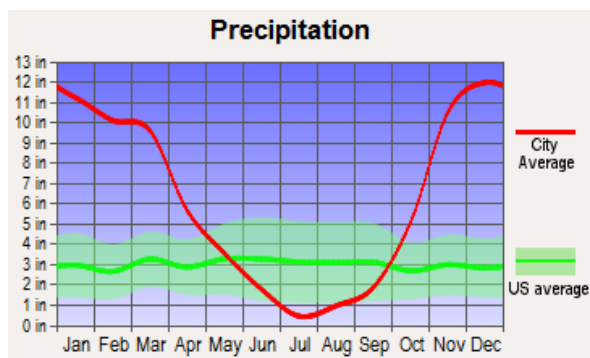
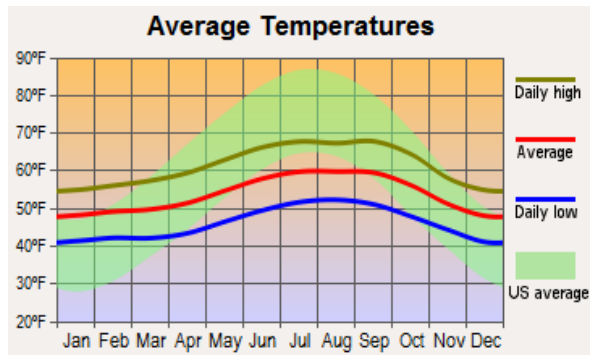
Precipitation

Brookings gets 79 inches of rain per year on average. The US average is 39 inches. Snowfall is 0 inches. The number of days with any measurable precipitation is 89.

Sunshine

On average, there are 191 sunny days per year in Brookings, Oregon. The July high is around 70 degrees. The January low is 42. The comfort index for Brookings is a 79 out of 100, where a higher score indicates a more comfortable year-around climate. The US average for the comfort index is 54.

*Source: City-Data.com



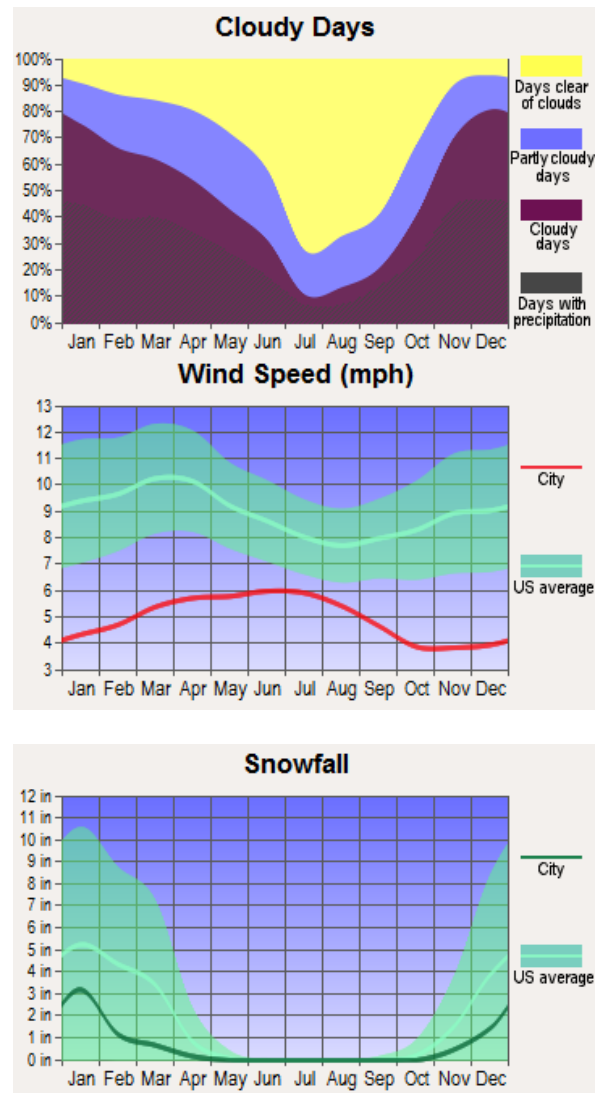
THE CHETCO EFFECT

The Chetco Effect is a meteorological phenomenon that affects the southern coast of Oregon, in which dry, adiabatic heating increases the temperature of a mass of air as it travels down slope. It can occur at any time of the year producing temperatures near the Chetco River mouth up to 40 °F higher than average. This is the same phenomenon as the Santa Ana winds.

On July 8, 2008, Brookings recorded a high temperature of 108°F at the airport. This was not only the highest recorded temperature in the town's history, but also the highest recorded in Oregon on that day. The Crescent City airport, approximately 30 miles south, recorded a high temperature of 68 ° that day. Temperatures in inland Oregon throughout the Willamette Valley reached temperatures into the mid-nineties.

Studies have shown that the north-to-south orientation of the Chetco River mouth and the town of Brookings plays a large role in the high temperatures recorded, and the reason the effect is localized. During most of the year, a sea breeze sets up along the coastline with prevailing surface winds from the northwest. The heart of Brookings, with its orientation, is protected from this maritime flow and the warm, dry, down-sloping winds that are funneled down the coastal range into the deep Chetco River gorge can reach the coast uninfluenced by the effects of the Pacific.

Often in the winter, temperatures in Medford may peak near 40 °F, while temperatures in Brookings will reach the upper 70's due to the effect, causing Brookings to live up to its "banana belt" reputation.



POPULATION

Between 2010 and 2017, the study area population of Curry County increased by an estimated 234 (5.7%). During the same period, the number of households increased by an estimated 558 (8.8%).

Projections through 2025 indicate that there will be approximately 15,982 people living in 7,796 households within the study area. This represents a population increase of 1,697 or 11.9%, and a household increase of 928 or 13.5%, from 2017 to 2025.

The positive population and household growth trends indicate the need for additional housing in the study area. It should be noted that the number of persons per household will shrink from an estimated 2.08 in 2017, to 2.05 in 2025. Both are well below Oregon (2.51) and national (2.63) persons per household.

Curry County population by age group:

	2000	%	2010	%	2015	%	2025	%	2050	%
0-19	4,418	20.9%	3,890	17.4%	3,383	15.2%	3,158	13.2%	3,101	12.3%
20-34	2,193	10.4%	2,590	11.6%	2,795	12.5%	2,871	12.0%	2,440	9.7%
35-54	5,892	27.9%	5,259	23.5%	4,437	19.9%	4,381	18.4%	5,170	20.5%
55-74	6,011	28.4%	7,830	35.0%	8,758	39.2%	9,145	38.3%	8,754	34.8%
75+	2,623	12.4%	2,786	12.5%	2,948	13.2%	4,299	18.0%	5,723	22.7%
Total	21,137	100.0%	22,355	100.0%	22,321	100.0%	23,854	99.9%	25,187	100.0%

Source: Office of Economic Analysis, State of Oregon

97415 Zip code population by age group:

	2000	%	2010	%	2015	%	2025	%	2050	%
0-19	2,767	20.8%	2,653	18.9%	2,145	15.6%	2,206	13.8%	2,310	13.1%
20-34	1,459	11.0%	1,668	11.9%	1,798	13.1%	2,253	14.1%	2,398	13.6%
35-54	3,501	26.3%	3,277	23.3%	2,948	21.4%	3,308	20.7%	3,614	20.5%
55-74	3,753	28.2%	4,643	33.0%	5,070	36.8%	5,993	37.5%	6,806	38.6%
75+	1,810	13.6%	1,810	12.9%	1,812	13.2%	2,222	13.9%	2,503	14.2%
Total	13,290	99.9%	14,051	100.0%	13,773	100.1%	15,982	100.0%	17,631	100.0%

Source: Office of Economic Analysis, State of Oregon



BROOKINGS ECONOMY

Brookings originally thrived on the lumber and commercial and sports fishing industries. Lily bulb farming was introduced in the 1920's. Although dwindling, lumber and fishing are still strong factors in the city's economy and the lily bulb farms, which are in a 12-mile area between Brookings and Smith River, California, produce 100% of the lily bulbs grown in North America. Because of these stable industries, Brookings is less dependent on the tourist trade than many Oregon coast cities.

The Brookings economy is trending toward increased tourism. Transient Occupancy Tax receipts increased by 30% in 2015 over 2014. The City is a member of the Oregon Coast Visitors Association (OCVA) and serves as the Destination Marketing Organization (DMO) for the Brookings area. Within the last three years, several new "upscale" eating and dining establishments have emerged in Brookings. This has contributed to a building reputation of Brookings being a "foodie town."



Labor - Economics & Jobs

As of November 2020, the unemployment rate in Brookings was 6.1%. Within Brookings' city limits, job growth was down .7% with an expected job growth rate of 32.2%.

With a new hospital in Gold Beach and a VA Clinic and emergency room in Brookings, the outlook for medical related jobs is high. As of March 2019, per capita income is \$25,561, household income is \$42,794 and family median income is \$60,509.

Curry County Labor Market

Curry County encompasses 1,648 square miles. In a 2014 report, Curry County had a population of 13,059 individuals of working age (about 58% of the total population). 63% of the population had some college and at least a high school diploma. 7% held Associate Degrees, 13% held Bachelor's Degrees, and 7% held Graduate/professional Degrees.

**Source: www.brookings.or.us Economic Profile*



EMPLOYMENT

Between 2014 and 2024, employment projections anticipate statewide job growth to be about 14%, with more rural areas seeing muted growth compared to the metro areas. The South Coast region, made up of Coos and Curry Counties, is projected to be about 7% growth by 2024. The majority of job openings (80% or 7,200) will be due to replacement openings, while the other 20% (or 1,600) account for growth openings.

Occupations with the most total openings that are considered to be high-wage and high-demand, (that is, those that pay more than the median wage for the area under consideration and those that have more than the median total number of openings) for the South Coast region include production jobs tied to wood products and logging, health care, transportation, and education.

Primary Employers in Brookings

Primary employers for the Brookings area include:

- South Coast Lumber
- Curry Health District/Network
- Curry General Hospital
- Brookings-Harbor School District
- City of Brookings
- Fred Meyer
- BC Fisheries
- Pacific Seafood
- Freeman Marine/Advantec
- Tidewater Contractors

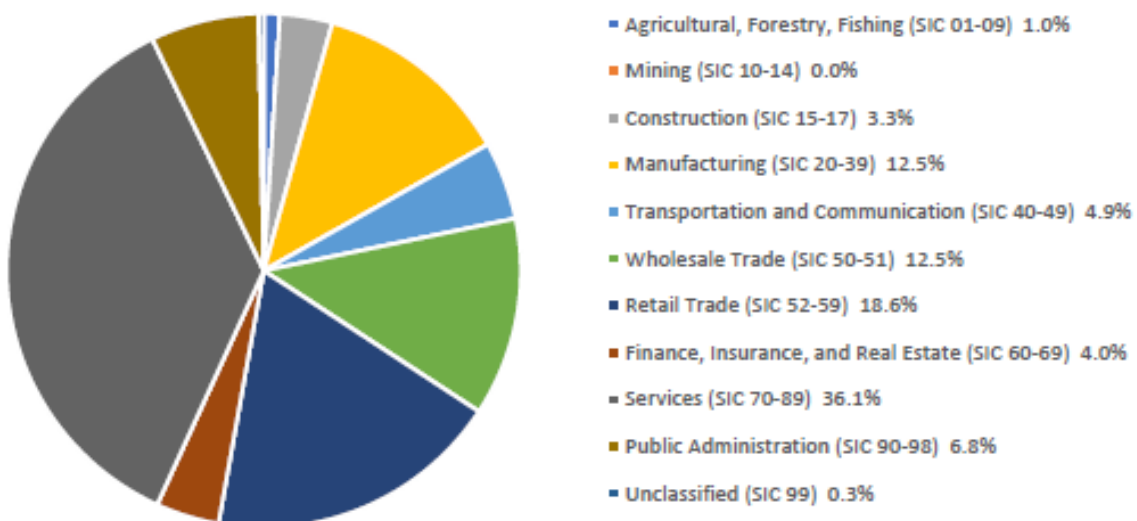
Resident Employment

The majority of the 11.8% of Brookings residents who work outside of the state, are employed by one of the following:

- Pelican Bay State Prison in Crescent City, CA – It is estimated that about one-third of the approx. 1,300 employees live in the Brookings area.
- Lucky 7 Casino and Resort in Smith River, CA
- Sutter Coast Hospital in Crescent City

**Source: South Coast Development Council Inc. 2017
Brookings Housing Needs Assessment*

Total Employees by Industry, Brookings



CURRY COUNTY HOUSING MARKET

RMLS Summary Table by Month and Year (Residential)

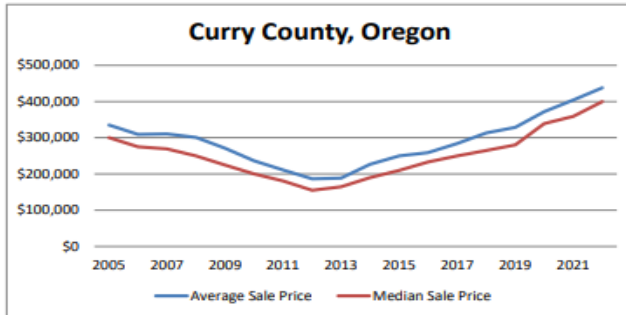
	**New Listings	**Pending Sales	**Closed Sales	Average Sale Price	Median Sale Price	*Total Market Time
2023	692	370	367	\$466,000	\$395,000	97
2022	640	456	487	\$438,000	\$400,000	58
2021	735	667	672	\$404,100	\$359,300	70
2020	683	635	596	\$372,000	\$339,000	147
2019	811	596	575	\$328,400	\$280,000	161
2018	859	594	614	\$313,400	\$265,000	158
2017	857	566	561	\$284,200	\$250,000	172
2016	820	597	564	\$258,700	\$233,100	157
2015	795	570	550	\$249,900	\$210,000	227
2014	728	435	423	\$227,000	\$190,000	269
2013	763	395	393	\$188,700	\$165,000	238
2012	671	351	332	\$187,000	\$155,000	251
2011	682	229	223	\$211,200	\$181,000	239
2010	726	249	247	\$236,200	\$200,000	226
2009	700	252	245	\$271,300	\$225,000	266
2008	756	192	198	\$300,900	\$250,000	233
2007	814	308	301	\$310,400	\$269,000	163
2006	906	319	320	\$309,600	\$275,000	121
2005	648	343	341	\$335,000	\$300,000	90

2023	New Listings	Pending Sales	Closed Sales	Average Sale Price	Median Sale Price	*Total Market Time	Inventory
January	25	21	23	\$ 499,600	\$ 375,000	85	5.8
February	25	26	16	\$ 400,000	\$ 372,500	121	8.4
March	40	30	21	\$ 409,600	\$ 356,000	84	6.5
April	59	31	26	\$ 473,800	\$ 420,000	165	6.2
May	75	41	26	\$ 605,600	\$ 370,000	74	7.0
June	75	57	35	\$ 539,600	\$ 439,000	108	5.6
July	74	45	39	\$ 569,200	\$ 400,000	57	5.5
August	63	49	47	\$ 438,200	\$ 389,000	96	4.4
September	51	36	38	\$ 427,700	\$ 351,000	98	5.5
October	48	36	33	\$ 389,600	\$ 365,000	111	6.3
November	29	23	20	\$ 389,400	\$ 414,800	106	9.8
December	19	24	29	\$ 406,500	\$ 385,000	85	5.8

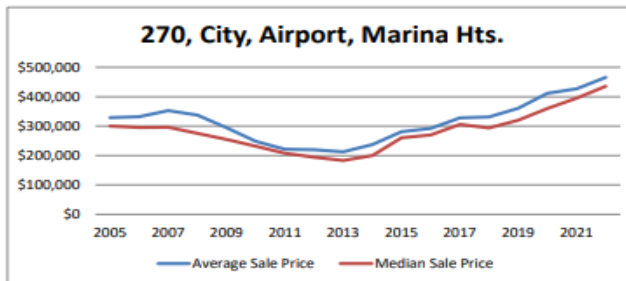


CURRY COUNTY HOUSING MARKET

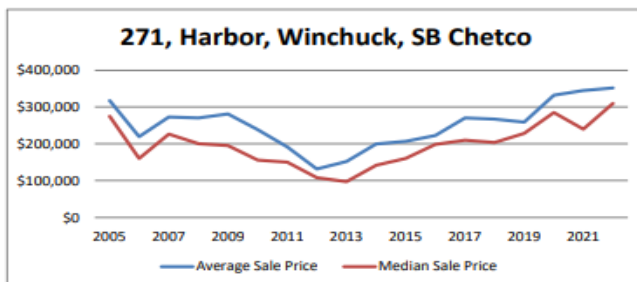
RMLS Average and Median Sales Price Appreciation by Area (Residential)



Curry County, Oregon				
	Average Sale Price	Change from Previous Year	Median Sale Price	Change from Previous Year
2005	\$335,000		\$300,000	
2006	\$309,600	-7.6%	\$275,000	-8.3%
2007	\$310,400	0.3%	\$269,000	-2.2%
2008	\$300,900	-3.1%	\$250,000	-7.1%
2009	\$271,300	-9.8%	\$225,000	-10.0%
2010	\$236,200	-12.9%	\$200,000	-11.1%
2011	\$211,200	-10.6%	\$181,000	-9.5%
2012	\$187,000	-11.5%	\$155,000	-14.4%
2013	\$188,700	0.9%	\$165,000	6.5%
2014	\$227,000	20.3%	\$190,000	15.2%
2015	\$249,900	10.1%	\$210,000	10.5%
2016	\$258,700	3.5%	\$233,100	11.0%
2017	\$284,200	9.9%	\$250,000	7.3%
2018	\$313,400	10.4%	\$265,000	6.0%
2019	\$328,400	4.8%	\$280,000	5.7%
2020	\$372,000	13.3%	\$339,000	21.1%
2021	\$404,100	8.6%	\$359,300	6.0%
2022	\$438,000	8.4%	\$400,000	11.3%



Area 270, City, Airport, Marina Hts.				
	Average Sale Price	Change from Previous Year	Median Sale Price	Change from Previous Year
2005	\$328,700		\$300,000	
2006	\$331,800	1.3%	\$295,000	-1.7%
2007	\$352,300	6.2%	\$295,800	0.3%
2008	\$337,900	-4.1%	\$275,800	-6.8%
2009	\$294,600	-12.8%	\$255,000	-7.5%
2010	\$248,700	-15.6%	\$232,000	-9.0%
2011	\$220,900	-11.2%	\$207,800	-10.4%
2012	\$219,400	-0.7%	\$194,000	-6.6%
2013	\$212,600	-3.1%	\$183,000	-5.7%
2014	\$237,100	12.2%	\$200,000	9.3%
2015	\$281,000	18.5%	\$260,000	30.0%
2016	\$291,900	3.9%	\$270,000	3.8%
2017	\$327,800	12.3%	\$306,000	13.3%
2018	\$331,500	1.1%	\$293,500	-4.1%
2019	\$360,900	8.9%	\$320,000	9.0%
2020	\$411,800	14.1%	\$360,000	12.5%
2021	\$426,500	3.6%	\$395,000	9.7%
2022	\$465,400	9.1%	\$435,000	10.1%

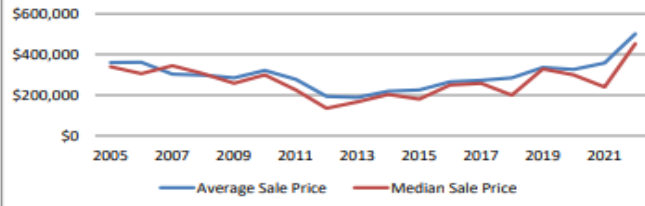


Area 271, Harbor, Winchuck, SB Chetco				
	Average Sale Price	Change from Previous Year	Median Sale Price	Change from Previous Year
2005	\$317,600		\$275,000	
2006	\$219,600	-30.9%	\$160,000	-41.8%
2007	\$272,700	24.2%	\$226,300	41.4%
2008	\$270,400	-0.8%	\$200,000	-11.6%
2009	\$281,300	4.0%	\$195,000	-2.5%
2010	\$238,700	-15.1%	\$155,600	-20.2%
2011	\$191,000	-20.0%	\$150,000	-3.6%
2012	\$131,700	-31.0%	\$108,000	-28.0%
2013	\$151,600	15.1%	\$97,500	-9.7%
2014	\$199,300	31.4%	\$141,500	45.1%
2015	\$206,300	3.5%	\$160,000	13.1%
2016	\$222,700	7.9%	\$198,000	23.8%
2017	\$270,500	21.5%	\$210,000	6.1%
2018	\$267,400	-1.2%	\$203,500	-3.1%
2019	\$259,100	-3.1%	\$228,000	12.0%
2020	\$332,300	28.3%	\$285,000	25.0%
2021	\$344,600	3.7%	\$240,000	-15.8%
2022	\$351,900	2.1%	\$310,000	29.2%

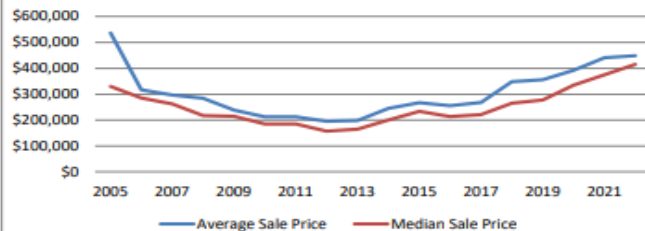


CURRY COUNTY HOUSING MARKET

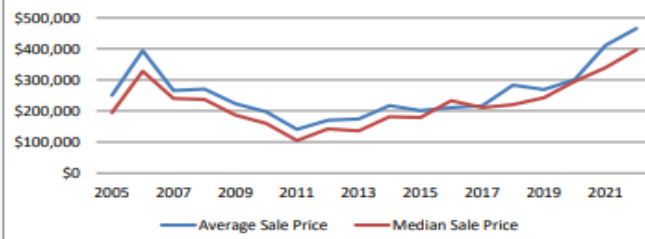
RMLS Average and Median Sales Price Appreciation by Area (Residential)

272, Carpenterville, Cape Ferrello, Whaleshead

	Average Sale Price	Change from Previous Year	Median Sale Price	Change from Previous Year
2005	\$360,700		\$340,000	
2006	\$361,800	0.3%	\$305,000	-10.3%
2007	\$302,800	-16.3%	\$345,000	13.1%
2008	\$297,900	-1.6%	\$305,000	-11.6%
2009	\$284,300	-4.6%	\$258,000	-15.4%
2010	\$321,700	13.2%	\$300,000	16.3%
2011	\$278,100	-13.6%	\$225,000	-25.0%
2012	\$193,700	-30.3%	\$135,000	-40.0%
2013	\$188,200	-2.8%	\$167,000	23.7%
2014	\$219,100	16.4%	\$203,000	21.6%
2015	\$225,700	3.0%	\$179,900	-11.4%
2016	\$264,800	17.3%	\$250,000	39.0%
2017	\$272,900	3.6%	\$257,500	3.0%
2018	\$284,800	4.4%	\$199,000	-22.7%
2019	\$336,600	18.2%	\$329,000	65.3%
2020	\$326,000	-3.1%	\$300,000	-8.8%
2021	\$358,000	9.8%	\$239,500	-20.2%
2022	\$501,700	40.1%	\$452,500	88.9%

273, Gold Beach

	Average Sale Price	Change from Previous Year	Median Sale Price	Change from Previous Year
2005	\$536,100		\$330,000	
2006	\$317,100	-36.6%	\$285,000	-13.6%
2007	\$296,600	-6.5%	\$262,500	-7.9%
2008	\$284,100	-4.8%	\$217,500	-17.1%
2009	\$238,400	-16.1%	\$215,000	-1.1%
2010	\$212,300	-10.9%	\$185,000	-14.0%
2011	\$213,100	-1.4%	\$185,000	0.0%
2012	\$195,600	-8.2%	\$157,000	-15.1%
2013	\$198,800	1.6%	\$164,800	5.0%
2014	\$245,100	23.3%	\$200,000	21.4%
2015	\$267,500	9.1%	\$233,500	16.8%
2016	\$255,300	-4.6%	\$213,600	-8.5%
2017	\$268,100	5.0%	\$221,300	3.6%
2018	\$348,500	29.8%	\$265,000	19.7%
2019	\$355,600	2.0%	\$277,500	4.7%
2020	\$392,200	10.3%	\$335,000	20.7%
2021	\$440,500	12.3%	\$375,000	11.9%
2022	\$448,600	1.8%	\$415,000	10.7%

274, Port Orford, Langlois

	Average Sale Price	Change from Previous Year	Median Sale Price	Change from Previous Year
2005	\$250,100		\$195,000	
2006	\$393,500	57.3%	\$327,500	67.9%
2007	\$266,000	-32.4%	\$240,300	-26.6%
2008	\$270,300	1.7%	\$237,000	-1.4%
2009	\$223,800	-17.2%	\$186,500	-21.3%
2010	\$196,800	-12.0%	\$160,000	-14.2%
2011	\$140,500	-28.6%	\$105,000	-34.4%
2012	\$169,900	21.0%	\$142,000	35.2%
2013	\$174,000	2.4%	\$136,000	-4.2%
2014	\$217,400	26.0%	\$181,000	33.1%
2015	\$200,900	-7.6%	\$179,000	-1.1%
2016	\$210,900	5.0%	\$233,100	30.2%
2017	\$216,500	2.7%	\$211,000	-9.5%
2018	\$283,100	31.7%	\$220,000	4.3%
2019	\$269,100	-4.5%	\$242,500	10.2%
2020	\$300,500	11.7%	\$295,000	21.6%
2021	\$411,700	37.0%	\$339,500	15.1%
2022	\$466,000	13.2%	\$397,000	16.9%



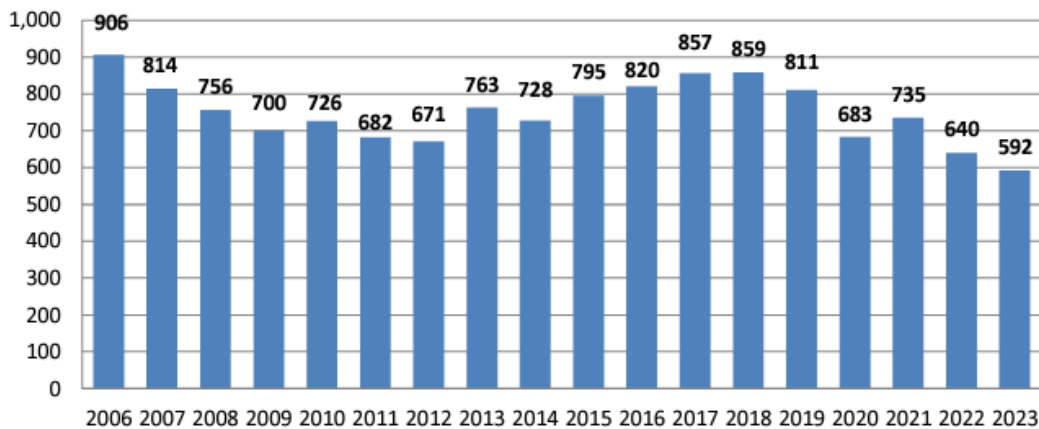
CURRY COUNTY HOUSING MARKET

RMLS New Listings by Month and Year (Residential)

	JAN	FEB	MAR	APR	MAY	JUN	JUL	AUG	SEP	OCT	NOV	DEC	**Total
2005	39	43	61	50	60	78	65	55	48	61	51	35	648
2006	45	64	85	85	129	131	79	81	66	51	36	45	906
2007	80	66	72	94	98	90	88	73	56	51	37	27	814
2008	52	67	76	86	78	87	75	54	43	40	38	31	756
2009	50	36	51	80	82	83	76	59	61	47	32	34	700
2010	41	60	68	90	82	69	85	71	47	44	25	24	726
2011	58	39	45	61	85	65	75	57	47	52	49	39	682
2012	49	59	42	66	75	90	61	58	43	48	38	31	671
2013	53	59	84	100	87	67	74	78	40	52	35	23	763
2014	47	52	64	88	89	76	95	51	56	51	36	21	728
2015	49	61	69	85	110	90	79	62	48	57	39	27	795
2016	44	51	81	96	97	86	73	80	76	53	42	33	820
2017	47	51	79	67	114	97	101	82	57	60	38	46	857
2018	62	55	76	88	79	90	90	82	60	64	57	36	859
2019	67	91	66	84	87	88	64	92	65	47	45	36	811
2020	44	52	49	35	58	70	64	70	63	69	53	45	683
2021	35	44	60	81	92	76	73	68	59	52	42	34	735
2022	48	47	50	42	68	74	73	67	50	37	45	24	640
2023	25	25	40	59	75	75	74	63	51	48	29	19	592
2024	45	49	60										

***If you add up each month, it will not equal the total, because the months reflect numbers reported in that month while the year total reflects a count that was taken at the end of the year. While we require status changes to be made within 24 hours, this does not always happen and can lead to this discrepancy.*

New Listings By Year: Curry County, Oregon

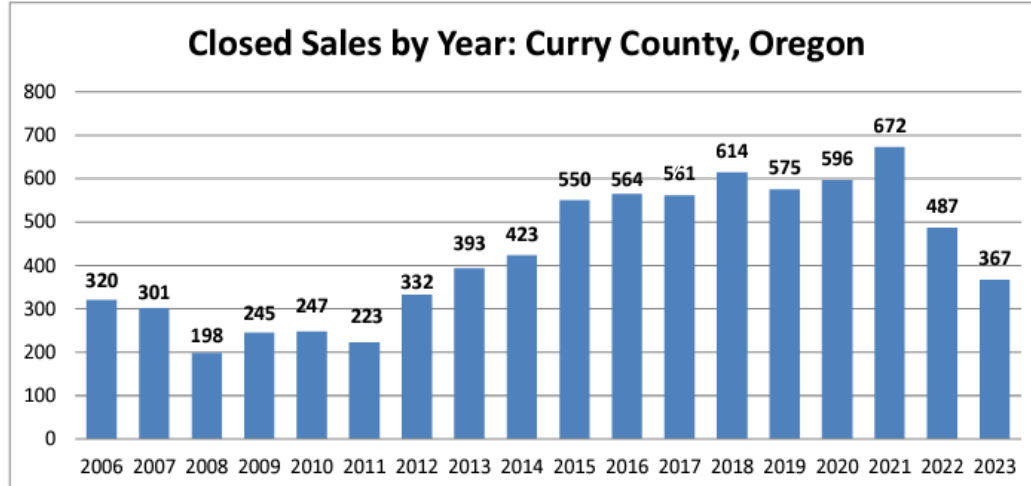


CURRY COUNTY HOUSING MARKET

RMLS Closed Sales by Month and Year

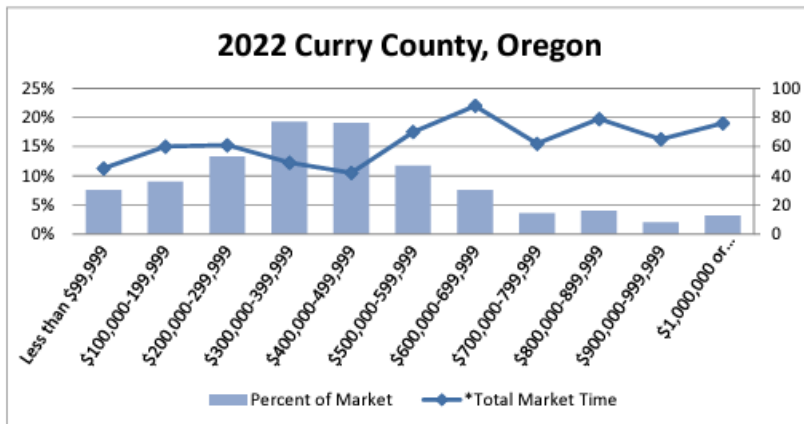
	JAN	FEB	MAR	APR	MAY	JUN	JUL	AUG	SEP	OCT	NOV	DEC	**Total
2005	23	21	15	20	22	31	30	41	46	32	27	22	341
2006	20	14	23	23	26	28	28	39	33	27	34	14	320
2007	16	19	24	26	21	27	32	29	24	37	26	14	301
2008	20	12	13	18	21	17	21	21	15	20	12	7	198
2009	9	13	19	17	12	21	27	24	30	22	29	21	245
2010	12	17	21	18	24	21	10	15	31	30	28	17	247
2011	11	15	14	15	21	20	24	23	26	17	17	18	223
2012	8	29	27	24	31	26	25	32	38	43	19	28	332
2013	24	20	23	39	30	36	49	43	36	30	31	28	393
2014	23	18	35	31	34	33	37	43	36	52	38	38	423
2015	32	28	24	53	39	55	53	60	55	58	35	52	550
2016	31	34	40	46	42	45	49	62	62	55	41	52	564
2017	41	35	41	32	42	47	55	61	54	51	46	48	561
2018	40	32	58	35	50	47	59	61	71	55	51	47	614
2019	24	34	41	39	59	52	52	66	51	59	38	58	575
2020	35	28	46	43	20	39	53	70	61	82	54	62	596
2021	42	50	61	62	46	68	69	55	55	53	56	49	672
2022	36	35	55	27	47	48	39	40	50	40	31	30	487
2023	23	16	21	26	26	35	39	47	38	33	20	29	367
2024	24	22	30										

***If you add up each month, it will not equal the total, because the months reflect numbers reported in that month while the year total reflects a count that was taken at the end of the year. While we require status changes to be made within 24 hours, this does not always happen and can lead to this discrepancy.*

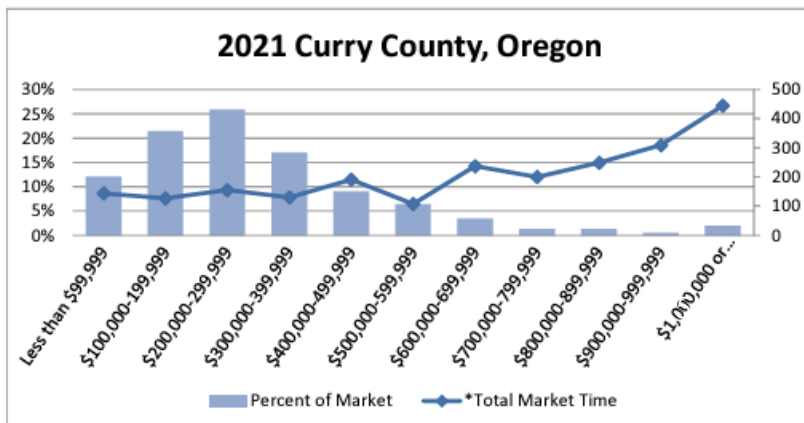


CURRY COUNTY HOUSING MARKET

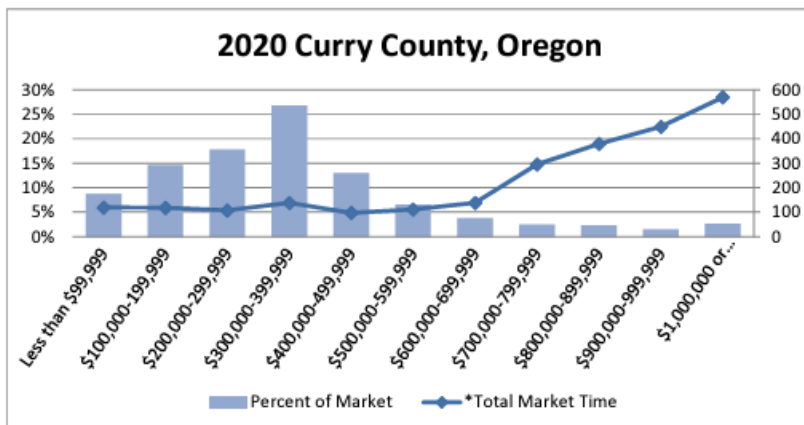
RMLS Market Percent and Time by Price Range



2022		
Sale Price Range	Percent of Market	*Total Market Time
Less than \$99,999	7.54%	45
\$100,000-199,999	8.93%	60
\$200,000-299,999	13.29%	61
\$300,000-399,999	19.25%	49
\$400,000-499,999	19.05%	42
\$500,000-599,999	11.71%	70
\$600,000-699,999	7.54%	88
\$700,000-799,999	3.57%	62
\$800,000-899,999	3.97%	79
\$900,000-999,999	1.98%	65
\$1,000,000 or more	3.17%	76



2021		
Sale Price Range	Percent of Market	*Total Market Time
Less than \$99,999	12.04%	144
\$100,000-199,999	21.39%	127
\$200,000-299,999	25.83%	155
\$300,000-399,999	16.96%	130
\$400,000-499,999	9.03%	191
\$500,000-599,999	6.34%	108
\$600,000-699,999	3.49%	237
\$700,000-799,999	1.27%	200
\$800,000-899,999	1.27%	249
\$900,000-999,999	0.48%	309
\$1,000,000 or more	1.90%	445



2020		
Sale Price Range	Percent of Market	*Total Market Time
Less than \$99,999	8.70%	119
\$100,000-199,999	14.61%	118
\$200,000-299,999	17.73%	107
\$300,000-399,999	26.77%	138
\$400,000-499,999	12.97%	97
\$500,000-599,999	6.57%	111
\$600,000-699,999	3.78%	138
\$700,000-799,999	2.46%	295
\$800,000-899,999	2.30%	379
\$900,000-999,999	1.48%	449
\$1,000,000 or more	2.63%	569



HOME RENTAL RESOURCES

Banana Belt Property Management

P.O. Box 969, Brookings, OR 97415
541-661-2570

www.facebook.com/BananaBeltPropertyManagement

Coastal Country Property Management

15440 Museum Road, Harbor, OR 97415
541-469-9568 | 541-661-2993

www.coastalcountryrentals.com

Optimum Property Management

16289 HWY 101, Brookings, OR 97415
541-661-3432

www.optimuminc.com

Paragon Property Management

520 Hemlock Street Brookings, OR 97415
541-412-7995

www.paragonoregon.com

Premier Ocean Properties

937 Chetco Ave, Brookings, OR 97415
541-469-7400

www.premieroceanprop.com

Curry Pilot Newspaper

www.currypilot.com/classifieds

FaceBook Community Groups:

- Brookville
- The Real Brookville
- Brookville
- Homesville for Rent
- Coastal Classifieds
- The Un-Brookville



BUILDING & PLANNING

Fees Overview

Building permit fees are based on the Building Valuation of the new construction. Fees are set by the State of Oregon and are used to fund the activities of the Building Department. System Development Charges are designed to offset the impact of additional development on infrastructure and services, including water, sewer, streets, parks and storm drain systems.

CURRY COUNTY

Department of Community Development

Curry County Courthouse

94235 Moore Street #113

Gold Beach, OR 97444

541-247-3304 | Fax 541-247-4579

www.co.curry.or.us

Building Codes Division

1535 Edgewater Street NW (physical)

Salem, OR 97304

P.O. Box 1447 (mailing)

Salem, OR 97309

503-378-4133 | Fax 503-378-2322

bcd.info@oregon.gov | www.oregon.gov

Dept of Environmental Quality (DEQ)

381 N 2nd Street

Coos Bay, OR 97420

541-269-2721

www.oregon.gov/deq

CITY OF BROOKINGS

Building Department

898 Elk Drive

Brookings, OR 97415

541-469-1135 | Fax 541-469-3650

www.brookings.or.us

CITY OF GOLD BEACH

Building Department

29592 Ellensburg Ave.

Gold Beach, OR 97444

541-247-7029 | Fax 541-247-2212

www.goldbeachoregon.gov

CITY OF PORT ORFORD

Building and Planning

555 W 20th Street

P.O. Box 310

Port Orford, OR 97465

541-332-3681

www.portorford.org

Surveyor Services

Michael Erickson, County Surveyor

541-290-9311 | hudgensp@co.curry.or.us

Barbara Colton, County Dept. Specialist

541-247-3225 | coltonb@co.curry.or.us

Roberts & Associates Land Surveying, Inc.

PO Box 1599

Brookings, OR 97415

541-469-0162 | rich@robertsassocls.com



Michael and Jill Lange, Owners/Principal Brokers

541-254-4088 | 541-254-4045

www.TheLangeTeam.com

Public Officials

U.S. SENATE

Jeff Merkley

107 Russell Senate Office Building
Washington, DC 20510
202-224-3753 | Fax 202-228-3997
121 S.W. Salmon Street, Suite 1250
Portland, OR 97204
503-326-3386 | Fax 503-326-2900
www.merkley.senate.gov

Ron Wyden

223 Dirksen Senate Office Building
Washington, DC 20510
202-224-5244 | Fax 202-228-2717
310 W Sixth Street #118
Medford, OR 97501
541-858-5122 | Fax 541-858-5126
www.wyden.senate.gov



U.S. REPRESENTATIVE

Peter DeFazio

2134 Rayburn Office Building
Washington, DC 20515
202-225-6416 | Fax 202-225-0032
125 W. Central Ave. #350
Coos Bay, OR 97420
541-269-2609 | Fax 541-269-5760
www.house.gov/defazio

GOVERNOR

Tina Kotek

900 Court Street N.E. #254
Salem, OR 97301
503-378-4582 | Fax 503-378-4863

STATE SENATE

David B. Smith

900 Court Street N.E. #H379
Salem, OR 97301
503-986-1401
Rep.davidbrocksmith@oregonlegislature.gov

STATE REPRESENTATIVE (DISTRICT 1)

Court Boice

900 Court Street N.E. H-479
Salem, OR 97301
Rep.CourtBoice@oregonlegislature.gov



County & City Departments

Curry County Website

www.co.curry.or.us

City of Brookings Website:

www.brookings.or.us

City of Gold Beach Website:

www.goldbeach.gov

Economic Development

Curry County Administrative Annex
94235 Moore Street, Suite 122
Gold Beach, OR 97444
Office: 541-247-3253 | Fax: 541-247-2718

Curry County District Attorney

Joshua A. Spansail, District Attorney

29821 Ellensburg, Ave
Gold Beach, OR 97444
Office: 541-247-3298
FAX: 541-247-6680

Curry County Board of Commissioners

94235 Moore Street #122
Gold Beach, OR 97444
Phone 541-247-3296
Toll-free 800-243-1996
Fax 541-247-2718
(refer to the website for current list of commissioners)

Brookings City Manager's Office

898 Elk Drive
Brookings, OR 97415
541-469-1102 | www.brookings.or.us

Brookings City Council

898 Elk Drive
Brookings, OR 97415
541-469-2163 | Fax 541-469-3650
www.brookings.or.us
(refer to the website for current council members)

Gold Beach City Council

29592 Ellensburg Ave
Gold Beach, OR 97444
541-247-7029 | www.goldbeachoregon.gov
(refer to the website for current council members)

Port Orford City Council

555 W. 20th Street
Port Orford, OR 97465
541-332-3681 | www.portorford.org
(refer to the website for current council members)



PUBLIC SAFETY

LAW ENFORCEMENT

Curry County Sheriff Department

John Ward, Curry County Sheriff

94235 Moore Street, Suite 311 (mailing)
29808 Colvin Street (Physical)
Gold Beach, Oregon 97444
541-247-3242 | www.co.curry.or.us

Brookings Police Department

Kelby McCrae, Chief of Police/Public Safety Director

898 Elk Drive
Brookings, OR 97415
541-469-3118 | www.brookings.or.us

Gold Beach Police Department

Joel Hensley, Chief of Police

29592 Ellensburg Ave
Gold Beach, OR 97444
541-247-6671

FIRE & RESCUE - BROOKINGS

City of Brookings Fire Department

Jim Watson, Operations Chief

Jeff Lee, Fire Marshall

898 Elk Drive
Brookings, OR 97415
541-469-1142 | www.brookings.or.us

Harbor Rural Fire Protection

98069 Benham Lane
Harbor, OR 97415
541-469-5301 | www.harborfire.org

Cape Ferrelo Rural Fire Protection

4068 Cape Ferrelo Road
Brookings, OR 97415
541-469-5637

Winchuck Rural Fire Protection

363 Winchuck River Road
Brookings, OR 97415
541-469-7751

Upper Chetco Rural Fire Protection

Gardner Ridge Road
Brookings, OR 97415

FIRE & RESCUE – GOLD BEACH

Gold Beach Fire Department

Tyson Krieger, Fire Chief

29592 Ellensburg Ave
Gold Beach, OR 97444
541-247-6204 | www.goldbeachoregon.gov

Pistol River Rural Fire Protection

24686 Pistol River Loop
Gold Beach, OR 97444
541-247-6765

Cedar Valley – North Fork Rogue River Fire Department

Cedar Valley Road
Gold Beach, OR 97444



PUBLIC EDUCATION

BROOKINGS

The Brookings-Harbor area is served by Brookings-Harbor School District #17-2 (BHSD) and provides education for kindergarten through the 12th grade.

Brookings-Harbor School District #17-2

629 Easy Street
Brookings, OR 97415
541-469-7443

www.brookings.k12.or.us

**Kalmiopsis Elementary School (Grades K-5)**

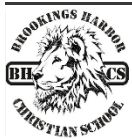
650 Easy Street
Brookings, OR 97415
541-469-7417

**Azalea Middle School (Grades 6-8)**

505 Pacific Ave
Brookings, OR 97415
541-469-7427

**Brookings-Harbor High School (Grades 9-12)**

625 Pioneer Street
Brookings, OR 97415
541-469-2108

PRIVATE SCHOOL**Brookings Harbor Christian School**

18881 Cornett Road, Brookings, OR 97415
541-469-6478 | www.bhchristianschool.webs.com

HIGHER EDUCATION**Southwestern Oregon Community College (SWOCC) – Curry Campus**

96082 Lone Ranch Parkway, Brookings, OR 97415
541-469-5017 | www.socc.edu



PUBLIC EDUCATION**GOLD BEACH**

Central Curry School District #1 was formed by the merger of four elementary school districts and one high school district in 1997, now consisting of Gold Beach High School and Riley Creek Elementary.

Central Curry School District #1

29516 Ellensburg Ave
Gold Beach, OR 97444
541-247-2003 | www.ccsd.k12.or.us

**Riley Creek Elementary
(Grades K-8)**

94350 6th Street
Gold Beach, OR 97444
541-247-6604

**Gold Beach High School
(Grades 9-12)**

29516 Ellensburg Ave
Gold Beach, OR 97444
541-247-6647

PORT ORFORD

Port Orford-Langlois School District is situated on the southern Oregon coast in northern Curry County. K-5 students remain at Driftwood School for all their classes. Grades 6-8 spend the afternoon at Pacific High School where they have PE, Health, Computers and Spanish. They also choose between Band, Leadership, Woodshop, Art and Robotics for elective classes.

PORT ORFORD LANGLOIS SCHOOL DISTRICT 2CJ

45525 Hwy 101
Sixes, OR 97476
541-348-2455 | www.2cj.com

**Driftwood School
(Grades K-8)**

1210 Oregon Street
Port Orford, OR 97465
541-332-2712

**Pacific High School
(Grades 9-12)**

45525 US Hwy 101
Port Orford, OR 97450
541-348-2293



HOSPITALS & MEDICAL CENTERS

The health care industry has made significant investment in Brookings with the opening of a \$20 million clinic by Curry Health Network, expanded services at the Sutter Coast Hospital and Veterans Administration clinics and the opening of a clinic by Valley Immediate Care. The local campus of Southwestern Oregon Community College has responded to this trend by focusing their curriculum on health services education.

BROOKINGS

Curry Medical Center & Urgent Care

500 5th Street, Brookings, OR 97415
541-412-2000 | www.curryhealthnetwork.com

Sutter Coast Health Center at Brookings

555 5th Street, Brookings, OR 97415
541-469-9205 | www.suttercoast.org

Brookings Harbor Medical Center

446 Oak Street, Brookings, OR 97415
541-469-7401 | www.bhmc-oak.com

Sutter Coast Imaging Center at Brookings

555 5th Street #2, Brookings, OR 97415
541-469-9205 | www.suttercoast.org

Oak Street Health Center

446 Oak Street Brookings, OR 97415
541-412-8898 | www.bhmc-oak.com

VA Clinic

840 Railroad Street, Brookings, OR 97415
541-412-1152 | www.va.gov

Coastal Home Health & Hospice Care

306 Wharf Street, Brookings, OR 97415
541-469-0405
www.coastalhomehealthhospice.org

Cal-Ore Life Flight Ground & Air

311 Cove Road, Brookings, OR 97415
541-469-7911 | www.lifeflight.org



HOSPITALS & MEDICAL CENTERS

GOLD BEACH

Curry General Hospital & Curry Health Network

94220 4th Street Gold Beach, OR 97444
541-247-3000 | 800-445-8085
www.curryhealthnetwork.com

North Bend Medical Center – Gold Beach

94180 2nd Street Gold Beach, OR 97444
541-247-7047 | www.nbmcweb.com

Curry County WIC – Women’s Health Clinic

94235 Moore Street Gold Beach, OR 97444
541-425-1608 | www.wicprograms.org

4th Street Medical Clinic

94125 4th Street Gold Beach, OR 97444
541-247-6628

Coastal Home Health & Hospice Care – Serving Gold Beach

306 Wharf Street Brookings, OR 97415
541-469-0405
www.coastalhomehealthhospice.org

CRESCENT CITY, CA

Sutter Coast Hospital

800 E Washington Blvd, Crescent City, CA
707-464-8511 | www.suttercoast.org

PORT ORFORD

Curry Family Medical

525 Madrona Street Port Orford, OR 97465
541-332-3861 | www.curryhealthnetwork.com

Coast Community Health Center

1312 Tichener Ave Port Orford, OR 97465
541-332-1114
www.coastcommunityhealth.org

A variety of other independent physicians, specialists, oral health care providers, and alternative and holistic health care providers are available. Check local listings.



PUBLIC SERVICES

POST OFFICES**Brookings**

711 Spruce Street
 Brookings, OR 97415
 541-412-7048 | www.usps.com

Gold Beach

29917 Harbor Way
 Gold Beach, OR 97444
 541-247-8142 | www.usps.com

Port Orford

311 7th Street
 Port Orford, OR 97465
 541-332-4251 | www.usps.com

DEPARTMENT OF MOTOR VEHICLES

97900 Shopping Center Ave, Suite 1
 Brookings, OR 97415
 541-469-2441 | www.oregon.gov/dot

FOOD BANKS**Brookings**

Brookings Harbor Food Bank
 539A Hemlock street
 Brookings, OR 97415
 541-469-6988 |
www.brookingsharborfoodbank.org

Gold Beach

Christian Help Food Bank
 29813 Colvin Street
 Gold beach, OR 97444
 541-247-4054
www.christianhelpfoodbank.com

Port Orford

The Common Good
 2015 Washington Street
 Port Orford, OR 97465
 541-332-1365

**NEWSPAPER****Curry Coastal Pilot**

15957 Highway 101, Suite 1
 Brookings, OR 97415
 541-813-1717 | www.currypilot.com

RADIO STATIONS**Curry Coast Community Radio (KCIW)**

100.7 FM
 625 Chetco Ave, Suite 100
 Brookings, OR 97415
 541-661-4098 | www.kciw.org

KURY Radio (KURY)

95.3 FM | 910 AM
 605 Railroad Street
 Brookings, OR 97415
 541-469-2111 | www.kuryradio.com

LIBRARIES**Chetco Community Public Library**

405 Alder Street, Brookings
 541-469-7738 | www.chetcolibrary.org

Curry Public Library

94341 3rd Street, Gold Beach
 541-247-7246 | www.currypubliclibrary.org

Port Orford Library

1421 Oregon Street Port Orford, OR 97465
 541-332-5622 | www.galepages.com



SENIOR RESOURCES

SENIOR ADVICE IN OREGON

Housing, Home Care & Senior Resources
800-334-9427 | www.senioradvice.com

ACTIVITY**Chetco Activity Center**

550 Chetco Avenue, Brookings
541-469-6822 | www.chetcoac.org

CARE**Coastal Home Health & Hospice**

306 Wharf Street
Brookings, Or 97415
541-469-0405
www.coastalhomehealthandhospice.com

Eldercare Connections

541-661-4285 | www.eldercare.com

Guardians by the Sea

16210 E. Hoffeldt Lane
Brookings, OR 97415
541-661-7011
www.theguardiansbythesea.com

**Oregon Department of Human Services
Seniors & People with Disabilities – Brookings
Office**

586 5th Street, Suite 200
Brookings, OR 97415
541-469-9299 | www.oregon.gov

**Seniors & People with Disabilities – Gold
Beach Satellite Office**

16399 Lower Harbor Road
Brookings, OR 97415
541-469-5306 | www.oregon.gov

Good Samaritan Society – Curry Village

1 Park Avenue Brookings, OR 97415
541-469-3111 | www.good-sam.com

LIVING – BROOKINGS**Azalea Gardens**

755 Elk Drive
Brookings, OR 97415
541-469-7182 |
www.azaleagardensseniorliving.com

Hillside Apartments

1 Park Avenue
Brookings, OR 97415
www.good-sam.com

Ocean Park Memory Care

984 Parkview Drive
Brookings, OR 97415
541-469-6817
www.oceanparkmemorycare.com

Rosewood Court Adult Care

503 Railroad Street
Brookings, OR 97415
541-469-1205

Sea View Senior Living Community

98059 Gerlach Lane
Brookings, OR 97415
541-469-4500 | www.seaviewseniorliving.com

LIVING – GOLD BEACH**Gold Beach Senior Center**

29841 Airport Way
Gold Beach, OR 97444
541-247-7506

Senior Activity Center

1536 Jackson Street Port Orford, OR 97465
541-332-5771



CHILD & YOUTH RESOURCES

CHILDCARE

ABC Kids Preschool

543 Hemlock Street, Brookings
541-813-1221

Choices for Children

248 Lundeen Road, Brookings
541-469-7950

Creative Learning Preschool

97826 Crestline Loop, Brookings
541-469-8916

It's a Kid's World Preschool & Daycare

702 Pioneer Road, Brookings
541-661-7982

Brookings Harbor Preschool

543 Fern Street, Brookings
541-661-2395

Kathy's Childcare

437 Fir Street, Brookings
541-412-1245

Little Critters Family Childcare

616 Easy Manor Drive, Brookings
541-469-1098

ACTIVITIES

Brookings Harbor Little League

www.brookingsharborlittleleague.org

Brookings-Harbor Skatepark

3rd Street, Brookings

Redwood Cinema

621 Chetco Ave, Brookings
541-412-7575 | www.redwoodtheater.com

**For more activities, see the "Exploring the Southern Oregon Coast" section*

SERVICES

Curry County Juvenile Services

94235 Moore Street, Ste 231, Gold Beach
541-247-3302
www.co.curry.or.us/Departments/Juvenile



PET & ANIMAL RESOURCES

GROOMING

Best in Show Dog Grooming

519 Chetco Avenue
Brookings, OR 97415
541-813-2330

Carson's Critter

97900 Shopping Center
Avenue
Brookings, OR 97415
541-469-9749

Kozy Kritter Inn

541-469-9085

One Cool Dog

97900 Shopping Center Ave
Brookings, OR 97415
541-661-1282

DOG PARKS

McVay Recreational State Park

Oceanview Drive
Brookings, OR 97415

Stout Park

300 Oak Street
Brookings, OR 97415

Chetco Point Dog Park

849 Chetco Point Terrace
Brookings, OR 97415
541-469-1103

Port Orford Dog Park

821 Lakeshore Drive
Port Orford, OR 97465

SUPPLIES

Carson's Critters

97900 Shopping Center
Ave #22
Brookings, OR 97415
541-469-9749

It's a Barking Lot

1103 Chetco Avenue
Brookings, OR 97415
541-251-0060

Mini Pet Mart

908 Chetco Avenue
Brookings, OR 97415
541-412-3903

Woof's Bakery

1031 Chetco Avenue
Brookings, OR 97415
541-469-3408

29525 Ellensburg Ave
Gold Beach, OR 97444
541-247-6835

Happy Tails Pet Supplies

1634 Oregon Street
Port Orford, OR 97465
541-366-2300

VETERINARIAN CARE

Brookings Harbor Veterinary Hospital

15630 Hwy 101
Brookings, OR 97415
541-469-7788

Gold Beach Veterinary Clinic

94211 3rd Street
Gold Beach, OR 97444
541-247-2513
www.goldbeachvetclinic.com

Town and Country Animal Clinic

Brookings -
15740 Hwy 101
Brookings, OR 97415
541-699-4661
www.townandcountryanimalclinic.com

Gold Beach-
29545 Ellensburg Ave
Gold Beach, OR 97444
541-247-9244

ANIMAL WELFARE

Curry County Animal Shelter

29921 Airport Way
Gold Beach, OR 97444
541-247-2514

South Coast Humane Society

828 Railroad Street
Brookings, OR 97415
541-412-0325

Wild Rivers Animal Rescue

29921 Airport Way
Gold Beach, OR 97444
541-247-2514
www.wildriversanimalrescue.org



CHURCHES

BROOKINGS

Assembly of God Calvary

518 Fir Street

Brookings-Harbor Christian

777 5th Street

Brookings Presbyterian

540 Pacific Avenue

Calvary Heritage

97900 Shopping Center Ave

Christian Community

15138 McVay Lane

Church of Christ

17222 Passley Road

First Baptist Community

607 Pacific Avenue

First Church-Christ Scientist

429 Pine Street

Grace Bible Church

302 N Hazel Street

Jehovah's Witnesses

1208 Ransom Avenue

Lighthouse Assembly

15803 Hwy 101

Living Waters Foursquare

1136 Fifield Street

Outreach Gospel Mission

15701 Hwy 101

St. Timothy's Episcopal

401 Fir Street

Seventh-Day Adventist

102 Park Avenue

Star of the Sea Catholic

820 Old County Road

The Church of Jesus Christ of Latter-day Saints

770 Elk Drive

Trinity Lutheran Church

1200 Easy Street

GOLD BEACH

First Baptist Church

29755 Turner Street

Calvary Chapel of GB

29935 Harbor Way

GB Church of Christ

94184 11th Street

Gold Beach Foursquare

94201 Moore Street

The Church of Jesus Christ of Latter Day Saints

94161 5th Place

Gold Beach Apostolic

29465 Ellensburg Ave

New Life Center Assembly of God

94245 6th Street

Sixth Street Baptist Church

94301 6th Street

Bethany Lutheran Church

94190 5th Street

GB Seventh Day Adventist

94191 3rd Street

St. Matthews Episcopal

94261 Moore Street

Little Church By the Sea

29692 Hillcrest Street

St. Charles Catholic

94323 Gauntlett Street

Jehovah Witness

94131 5th Street

Oceanview Community

33055 Hillside Road

Redemption Church

29392 Ellensburg Ave

PORT ORFORD

First Community Church

2025 Jackson Street

Christian Center

936 Washington Street

Calvary Port Orford

1536 Jackson Street

Zion Lutheran Church

2015 Washington Street

St John Baptist Catholic

US Hwy 101

The Church of Jesus Christ of Latter Day Saints

2000 Jackson Street

St. Christopher Episcopal

417 9th Street



UTILITY PROVIDERS

ELECTRIC/POWER**Coos-Curry Electric Cooperative, Inc.**866-352-9044 | www.ccec.coop**Brookings**815 Railroad Street, Brookings, OR 97415
Phone: 541-469-2103 | Fax: 541-469-3193**Gold Beach**29439 Ellensburg, Gold Beach, OR 97444
Phone: 541-247-6638 | Fax: 541-247-6630**Port Orford**43050 Hwy 101 Port Orford, OR 97465
Phone: 541-332-3931 | Fax: 541-332-3501**WATER/SEWER****Brookings**City of Brookings
898 Elk Drive, Brookings, OR 97415
Phone: 541-469-1125 | Fax: 541-469-3650
www.brookingsor.us**Harbor Water District PUD**98069 West Benham Lane Harbor, OR 97415
541-469-3011 | www.harborwaterpud.net**Gold Beach**City of Gold Beach
29592 Ellensburg Ave Gold Beach, OR 97444
Phone: 541-247-7029 | Fax: 541-247-2212
www.goldbeachoregon.gov**Nesika Beach Ophir Water District**32876 Nesika Road
Gold Beach, OR 97444
541-247-2614 | www.nbowd.org**Port Orford**City of Port Orford
555 W 20th Street
Port Orford, OR 97465
541-332-3681 | www.portorford.org**DISPOSAL SERVICES****Curry Transfer & Recycling**17498 Carpenterville Rd Brookings, OR 97415
Phone: 541-469-2425**Wridge Creek Transfer Station**Wilderness Road Brookings, OR 97415
541-469-2425**Nesika Beach Transfer Station**32450 Edison Creek Road
Gold Beach, OR 97444
541-469-2425**Port Orford Transfer Station**42750 Arizona Street
Port Orford, OR 97465
541-469-2425**INTERNET/TELEVISION/PHONE****AT&T**855-483-3222 | www.att.net**Beacon Broadband**541-254-9265 | www.beaconbroadband.com**Spectrum Communications**888-438-2427 | www.spectrum.com**Direct TV**800-490-4388 | www.directv.com**Dish Network**855-401-6944 | www.dish.com**Hughes Net Satellite Internet**844-504-0259 | www.fasthughesnet.com**Verizon**844-773-6170 | www.verizon.com**Ziplay Fiber**866-489-0847 | www.ziplayinternet.com



Michael and Jill Lange, Owners/Principal Brokers
541-254-4088 | 541-254-4045
www.TheLangeTeam.com



VISITING THE Southern Oregon Coast



CHAMBER OF COMMERCE & WELCOME CENTERS

BROOKINGS

Oregon Welcome Center

14433 US Highway 101 South, Brookings
541-469-4117 | www.oregonstateparks.org

Curry County Chamber of Commerce

907 Chetco Ave, Brookings
541-469-3181
www.brookingsharborchamber.com

Brookings Visitor Center

898 Elk Drive, Brookings
541-469-1103 | www.brookings.or.us

Brookings City Hall

898 Elk Drive, Brookings
541-469-1103

GOLD BEACH

Gold Beach Chamber of Commerce

29692 Ellensburg Avenue #6, Gold Beach
541-247-0923
www.goldbeachchamber.com

Gold Beach Visitor Center

94080 Shirley Lane, Gold Beach
800-525-2334
www.visitgoldbeach.com

PORT ORFORD

Port Orford Visitor Center

520 Jefferson Street, Port Orford
541-332-4106 | www.portorford.org

Port Orford & North Curry Chamber of Commerce

P.O. Box 637 Port Orford, OR 97465
541-366-8665
www.portorfordchamber.com



Oregon Welcome Center
Crissey Field State Park



DINING IN BROOKINGS

AMERICAN

Fely's

97900 Shopping
Center Ave,
Brookings
541-251-3375

Foxy's Restaurant

16011 Boat Basin
Road, Brookings
541-813-1875

Mattie's Pancake House

15975 Hwy 101, Brookings
541-469-7211



ASIAN

Kaya Sushi & Noodle House

777 Cottage Street, Brookings
541-813-2888

BISTRO

Black Trumpet Bistro (★★★★★)

625 Chetco Ave, Brookings
541-887-0860

BRAZILION

Tropicalia Brazilian Cuisine

777 Cottage Street, Brookings
541-251-0176

BREWERY

Chetco Brewing Company (★★★★★)

830 Railroad Street,
Brookings
541-661-KEGS



Misty Mountain Brewing

625 Chetco Ave, Brookings
541-813-2599

CAFÉ

Blue Water Café

97900 Shopping Center Ave, Brookings
541-469-5005

Compass Rose Café (★★★★★)

625 Chetco Ave, Brookings
541-661-7772

Jack Creek Café

99040 S Bank Chetco, Brookings
541-469-4888

Stephanie's Restaurant at Whaleshead

19921 Whaleshead Road, Brookings
541-813-2760

CHINESE

Chan's Restaurant

16389 Lower Harbor Road, Brookings
541-469-7103

Dragon Palace

1025 Chetco Ave, Brookings
541-412-8686

Rice Bowl

16215 W Hoffeldt Lane, Brookings
541-469-7058



COFFEE HOUSE

The Bell & Whistle Coffee House (★★★★★)

16340 Lower Harbor Road, Brookings
541-412-9876

Compass Rose Café (★★★★★)

555 Chetco Ave, Brookings
541-661-7772

DISTILLERY

Brandy Peak Distillery

541-469-0194

Superfly Distilling Company

623 Memory Lane, Brookings
530-520-8005



GRILL

101 Bar & Grill

98141 W Benham Lane, Brookings
541-469-6037

Superfly (★★★★★)

623 Memory Lane, Brookings
530-520-8005

ICE CREAM

Slugs-n-Stones-n-Ice Cream Cones

Harbor Boardwalk, Brookings
541-469-7584

ITALIAN

Black Trumpet Bistro (★★★★★)

625 Chetco Ave, Brookings
541-887-0860

Sprezzatura

434 Redwood Street, Brookings
541-813-2390

MEXICAN

Cazadores Mexican Restaurant

16218 Lower Harbor Road, Brookings
541-813-2632

Cielito Linda

500 Chetco Ave, Brookings
541-469-2525

La Flor De Mexico

541 Chetco Ave, Brookings
541-469-4102

Pancho's Restaurant

1136 Chetco Ave, Brookings
541-469-6531

Rancho Viejo

1025 Chetco Ave, Brookings
541-412-0184

SEAFOOD

Hungry Clam

16350 Lower Harbor Road, Brookings
541-469-2526

Catalyst Seafood Restaurant & Lounge

16182 Lower Harbor Road, Brookings
541-813-2422



PIZZA

Fat Cat Pizza

16261 Hwy 101, Brookings
541-469-8400

Wild River Pizza

16279 Hwy 101, Brookings
541-469-7454

Zola's on the Water (★★★★★)

16374 Lower Harbor Road, Brookings
541-412-7100



PUB

Fat Irish Kitchen & Pub (★★★★★)

16403 Lower Harbor Road, Brookings
530-520-8005



Oxenfre' Public House (★★★★★)

631 Chetco Ave, Brookings
541-813-1985

SUSHI

Pacific Sushi & Grill (★★★★★)

613 Chetco Ave,
Brookings
541-251-7707



THAI

Khun Thai (★★★★★)

925 Chetco Ave, Brookings
541-412-0555

VEGAN (★★★★★)

Off the Wagon Food Truck (Chetco Brewery)

830 Railroad Street, Brookings
541-661-5347

Yumberry Bowl Food Truck

16261 US Hwy 101, Brookings
541-813-1633



DINING IN GOLD BEACH

AMERICAN

Behind the Red Door Eatery

29745 Ellensburg Ave, Gold Beach
541-425-5551

The Landing on the Rogue

94749 Jerry's Flat Road, Gold Beach
541-425-5426

BREWERY

Arch Rock Brewing

28779 Hunter Creek Loop, Gold Beach
541-247-0555

CAFÉ

Double D's Café

29441 Ellensburg Ave, Gold Beach
541-247-6565

Indian Creek Café

94682 Jerry's Flat Road, Gold Beach
541-247-0680

Y Knot Café

29844 Ellensburg Ave, Gold Beach
541-247-6767

CANADIAN CUISINE

Anna's

29672 Stewart St, Gold Beach
541-247-2100

CHINESE

Wong's Café

29775 Ellensburg Ave, Gold Beach
541-247-7423

GRILL

Hunter Creek Bar & Grill

28773 Hunter Creek Loop, Gold Beach
541-247-6100



MEXICAN

Casita De Oro

29471 Ellensburg Ave, Gold Beach
541-247-9030

PIZZA

Panther's Den

29513 Ellensburg Ave, Gold Beach
541-247-8899

Sunset Family Pizza

29790 Ellensburg Ave, Gold Beach
541-247-7208

STEAK & SEAFOOD

Barnacle Bistro

29805 Ellensburg Ave, Gold Beach
541-247-7799



Chowder House at Pacific Reef

29374 Ellensburg Ave, Gold Beach
541-425-5201

Nor' Wester

10 Harbor Way, Gold Beach
541-247-2333

Port Hole Café

29975 Harbor Way, Gold Beach
541-247-7411

Spinner's

29430 Ellensburg Ave, Gold Beach
541-247-5160

The Crow's Nest

29850 Ellensburg Ave, Gold Beach

The Rod-n-Reel Restaurant & Bar

94321 Wedderburn Loop, Wedderburn
541-247-4471

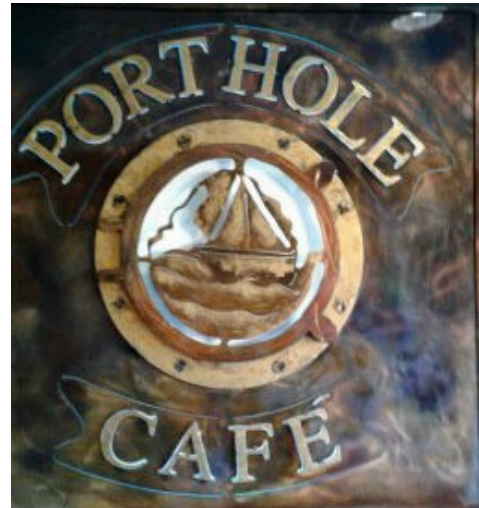
Woggy's Fish-n-Chips

29891 Harbor Way
541-373-0188

THAI

Good Thai on Wheels

29785 Ellensburg Ave, Gold Beach
541-661-2442



EASY LIVING TOWNHOME VACATION RENTAL

Offered by owners Michael and Jill Lange of South Coast Real Estate is a beautiful, newly remodeled vacation rental townhome. Located in the heart of Brookings, Oregon, less than a mile from Harris Beach, the townhome is walkable to downtown and Harries Beach State Park and Beach. Easy access to the Samuel H. Boardman Scenic Corridor and moments from hiking, kayaking, bike trails, the port & marina and just 30 minutes to the mighty redwood forests.

The 1500 SF townhome offers 3 bedrooms (4 beds) and 2.5 bathrooms and sleeps up to 8 people. The home is fully furnished and comes equipped with everything you need to enjoy your time on the southern Oregon Coast. Enjoy generous ocean views from the upper-level living room, kitchen and primary bedroom. And for the furry family members, we welcome well-behaved, house-trained dogs (limit of 2) and offer a fully fenced yard for their comfort and safety. Off street parking and free EV charger for guests!

Visit www.Airbnb.com/easylivingtownhome for more information and contact Michael and Jill Lange to direct book your next visit to the beautiful southern Oregon Coast!



HOTELS & MOTELS

At River's Edge RV Resort

98203 S Bank Chetco Road, Brookings
541-469-3356 | www.atriversedge.com

Beachfront Inn

16008 Boat Basin Road, Brookings
541-469-7779 | www.bestwestern.com



Brookings Inn Resort

1143 Chetco Ave, Brookings
541-813-1444

Blue Coast Inn & Suites

1216 Chetco Ave, Brookings
541-469-2161 | www.bluecoastinnsuites.com

Harbor Inn Motel

15991 US Hwy 101, Brookings
541-469-3194 | www.harborinnmotel.com

Ocean Suites Motel

16045 Lower Harbor Road, Harbor
541-469-4004 | www.oceansuitesmotel.com

Pacific Sunset Inn

1144 Chetco Ave, Brookings
541-469-2141 | www.pacificsunsetinn.com

Portside Suites

16220 Lower Harbor Road, Brookings
541-469-7100 | www.portsidesuites.com

Spindrift Inn

1215 Chetco Ave, Brookings
541-469-5345 | spindriftmotorinn.us

Westward Inn

1026 Chetco Ave, Brookings
541-469-7471 | www.westwardinn.com

Whaleshead Beach RV Resort

19921 Whaleshead Road, Brookings
541-469-7446 | www.whalesheadresort.com

Wild Rivers Motorlodge

437 Chetco Ave, Brookings
541-469-5361
www.wilddriversmotorlodge.com



CAMPGROUNDS & RV PARKS

Alfred A Loeb State Park

N Bank Chetco River Road, Brookings
800-551-6949 | www.oregonstateparks.org

Apple Hill RV Park

15061 Hwy 101 South, Brookings

At River's Edge

98203 S Bank Chetco Rd, Brookings
541-469-3356 | www.atriversedge.com

Beachfront RV Park

16035 Boat Basin Rd, Brookings
800-441-0856 | www.beachfrontrvpark.com

Brookings RV Park

96707 E Harris Heights Rd, Brookings
541-469-6849 | www.brookingsrv.com

Chetco RV Park

16117 US Hwy 101, Brookings
541-469-3863 | www.chetcorvpark.com

Driftwood RV Park

16011 Lower Harbor Rd, Brookings
541-469-9089 | www.driftwoodrvpark.com

Harris Beach State Park

Hwy 101, Brookings
800-551-6949 | www.oregonstateparks.org

Ludlum Campground

Winchuck River Road, Brookings
877-444-6777

Miller Bar & Nook Bar Campgrounds

N. Bank Chetco Rd, Brookings

Portside RV Park

16219 Lower Harbor Rd, Brookings
541-469-6616 | www.portside-rvpark.com

Redwood Bar Campground

N. Bank Chetco Road Brookings

River Bend Terraces

97864 Payne Rd, Brookings
541-251-3334

Riverside RV Resort

97666 N. Bank Chetco Rd, Brookings
541-469-4799 | www.riverside-rv.com

Sea Bird RV Park

16429 Highway 101, South Brookings
541-469-3512 | www.seabirdrv.com

South Fork Chetco Campground

N. Bank Chetco Rd, Brookings

Winchuck Campground

Winchuck River Rd, Brookings



HOTELS & MOTELS

Azalea Lodge

29481 Ellensburg Ave, Gold Beach
541-247-4455 | www.azalealodge.biz

Four Seasons RV Resort

96526 N Bank Rogue River Rd, Gold Beach
541-247-4503 | www.fourseasonsrv.com

Gold Beach Inn

29346 Ellensburg Ave, Gold Beach
541-247-7091 | www.goldbeachinn.com

Inn of the Beachcomber

29266 Ellensburg Ave, Gold Beach
541-247-6691
www.innofthebeachcomber.com

Ireland's Rustic Beach

29330 Ellensburg Ave, Gold Beach
541-247-7718
www.irelandsrusticlodges.com

Jot's Resort

94360 Wedderburn Loop, Wedderburn
541-247-6676 | www.jotsresort.com

Motel 101

29399 Ellensburg Ave, Gold Beach
541-247-3456 | www.motel101.net

Motel 6 Gold Beach

94433 Jerry's Flat Rd, Gold Beach
541-247-4533 | www.motel6.com

Oregon Trail Lodge

29855 Ellensburg Ave, Gold Beach
541-247-6030 | www.oregontrailodge.com

Pacific Reef Hotel

29362 Ellensburg Ave, Gold Beach
541-247-6658
www.pacificreefhotel.com

Rogue Pacific Vacation Rentals

29450 Ellensburg Ave, Gold Beach
541-373-8255
www.roguepacificmotel.com

Sure Stay

29232 Ellensburg Ave, Gold Beach
541-247-7066 | www.gbresort.com

TuTu'Tun Lodge

96550 N Bank Rogue River Rd, Gold Beach
541-247-6664 | www.tututun.com

Wild Chinook Inn

94200 Harlow St, Gold Beach
661-809-3802 | www.chinookinn.com



RV PARKS & CAMPGROUNDS

Anglers Trailer Village

95706 Jerry's Flat Rd, Gold Beach
541-247-7922 | www.anglersrvvillage.com

Four Seasons RV Resort

96526 N Bank Rogue Rd, Gold Beach
541-247-4503 | www.fourseasonsrv.com

Gold Beach RV Park

94205 1st St, Gold Beach
541-247-0709 | www.goldbeachrvpark.com

Honey Bear by the Sea RV Resort

34161 Ophir Rd, Gold Beach
541-247-2765 | www.honeybearbythesea.com

Hunter Creek Mobile & RV Park

28555 Hunter Creek Loop, Gold Beach
541-247-2322

Huntley Park

96847 Jerry's Flat Rd, Gold Beach
541-247-9377 | www.portofgoldbeach.com/HuntleyPark

Indian Creek Recreational Park

94680 Jerry's Flat Rd, Gold Beach
541-247-7704 | www.indiancreekrv.com

Ireland's Ocean RV Park

29272 Ellensburg Ave, Gold Beach
541-247-0148 | www.irelandsrvpark.com

Kimball Creek Bend RV Resort

97136 N Bank Rogue Rd, Gold Beach
541-247-7580 | www.kimballcreek.com

Lex's Landing

94224 N Bank Rogue Rd, Gold Beach
541-247-0909 | www.lexslanding.com

Lucky Lodge RV Park

32040 Watson Ln, Gold Beach
541-247-7618 | www.luckylodgervpark.com

Nesika Beach RV Park

32887 Nesika Rd, Gold Beach
541-247-6077 | www.nbrvp.com

Oceanside RV Park

94040 S Jetty Rd, Gold Beach
541-247-2301

Rogue Pacific RV Park & Vacation Rentals

29450 Ellensburg Ave, Gold Beach
541-373-8255 | www.roguepacificmotel.com

Secret Camp RV & Tent Park

95614 Jerry's Flat Rd, Gold Beach
541-247-2665 | www.secretcamprvpark.com

Turtle Rock Resort

28788 Hunter Creek Loop, Gold Beach
541-247-0709 | www.turtlerockresorts.com





EXPLORING THE Southern Oregon Coast



The southern Oregon coast is an area of abundant natural attractions with miles of coastline, wild scenic rivers, state and city parks, and an attractive port. Take time to explore the many beaches, picnic or walk the adjacent trails. Some of these beaches boast a treasure-trove of shells and stones, while others provide a glimpse into marine life through tidepools.

Brookings area activities include:

- Camping
- Fishing, clamming, crabbing
- Charter tours – river & ocean
- Boating, kayaking
- River rafting, canoeing, paddle boarding
- Hiking, biking
- Swimming
- Beachcombing, tide-pooling
- Wildlife viewing, bird watching
- Whale watching
- Surfing, body surfing
- Kite surfing, wind surfing
- Golfing
- Horseback riding
- Redwood trails
- Jet boat tours
- Lighthouses
- Waterfalls
- Museums
- Salmon spawning, fish hatcheries
- Four-wheeling
- Glass float treasure hunting
- Wine tasting
- And so much more!



CALENDAR OF EVENTS & FESTIVALS

Check out the "Welcome to the Southern Oregon Coast" FaceBook page for current events.

ONGOING:

- Second Saturday Art Walk
- Every Thursday Brown Bag Lunch at Brian Scott Gallery
- Saturday Artisan Market at the Port of Brookings – Harbor

**DECEMBER – MARCH:**

- Whale Watching

JANUARY:

- Port of Brookings Crab Festival
- Winter Art Warmer

FEBRUARY:

- Slippery Banana Belt Softball Tournament
- Salmon Run Valentines Dinner
- Annual Art & Chocolate Festival

MARCH:

- SOLVE Spring Oregon Beach Cleanup
- Whale Watching Spoken Here

MAY:

- CASA Mardi Gras Ball
- Azalea Festival & Parade
- Azalea Festival Art & Car Show

- Curry County Cruisers Show-n-Shine
- Rock the Chetco
- Azalea Scholarship Pageant
- Brookings Garage Sale Saturday
- Swing into Spring Festival (GB)
- Annual Whale of a Wine Festival (GB)

JUNE:

- Wild Rogue Relay Race
- Pistol River Wave Bash

JUNE – OCTOBER

- American Music Festival Free Summer Concerts in the Park
- Saturday Farmer's Market
- Gold Beach Curry Grown & Crafter Market

**JULY:**

- 4th of July Celebration & Chili Cookoff, Fireworks at the Port
- Port of Gold Beach Party & Fireworks
- Port Orford 4th of July Jubilee
- Bandon 4th of July Celebration & Parade
- Stout Park Festival of Art
- Relay for Life Walk



AUGUST:

- Pirates of the Pacific Festival
- Festival of Art in Stout Park
- Stout Mountain Railway
- Curry County Fair & Livestock Show
- Rotary Salmon Derby (GB)
- South Coast Lumber Golf Tournament
- Agness Tomato Festival

SEPTEMBER:

- American Music Festival
- Slam'n Salmon Ocean Derby
- Raining Cats & Dogs Festival
- Cycle Oregon – Bike the Rogue
- Donkey Baseball
- Annual Wild Rivers Dahlia Society Show
- SOLVE Beach & River Cleanup
- Bandon Cranberry Festival
- Gold Beach Brew & Art Festival
- Street Rodder & Classic Car Show

OCTOBER:

- Brookings Garage Sale Saturday
- Oktoberfest
- Stout Mountain Railway Ghost Express
- Cider on Sunday – Chetco Valley Historical Museum

**NOVEMBER:**

- Turkey Trot Tournament at the Salmon Run Golf Course
- Community Holiday Bazaar
- Christmas Bazaar

NOVEMBER – DECEMBER:

- Nature's Coastal Holiday Light Show
- Holidays at the Port of Brookings

DECEMBER:

- Stout Mountain Railway Christmas Carnival
- Whale Watching Spoken Here



PORT OF BROOKINGS – HARBOR

It's hard to pick just one activity here – but you can make a day out of exploring them all. Start your day off with a cup of coffee or breakfast at one of several coffee houses or restaurants and then head to Sporthaven Beach where you can beachcomb and gather driftwood. Stroll the oceanfront sidewalk at the Beachfront RV Park or alongside the Chetco River. The boardwalk area, off Lower Harbor Road, offers numerous restaurants and shops providing everything from ice cream to crab and fishing gear.

From nearly every vantage point, port visitors can watch recreational and commercial fishing boats come and go, as well as spy a variety of wildlife.

A number of festivals are scheduled throughout the year including the 4th of July fireworks show, Saturdays at the port, and more.



PORT OF GOLD BEACH

Enjoy an afternoon watching recreational fishing boats jockey for world-class salmon as the Rogue River passes under the shadow of the scenic Patterson Memorial Bridge before reaching the Pacific.

The partially sunken Mary D. Hume, an ancient fishing vessel, points the way to the port's commercial hub that includes businesses such as Jerry's Rogue Jets, boat rentals, an ice cream shop and coffee house.

Don't forget to book a guided fishing trip or sign up for a ride on a vintage biplane at the nearby airport. Jerry's Rogue River Museum features an extensive display of local history and a wildlife diorama.



ART GALLERIES

BROOKINGS**Manley Arts Center**

433 Oak Street, Brookings

541-469-1807 | www.wilddriverscoastart.com**Brian Scott Gallery**

515 Chetco Ave, Brookings

541-412-8687 |

www.brianscottartgallery.com**Semi-Aquatic Gallery**

654 Chetco Ave, Brookings

502-504-2861 |

www.semiaquaticgallery.com**The Fog & Fine Art Gallery |
Wrights Custom Art & Framing**

810 Chetco Ave, Brookings

541-469-7900 | www.wrightsframe.com**GOLD BEACH****Gold Beach Books & Art Gallery**

29707 Ellensburg Avenue, Gold Beach

541-247-2495 | www.goldbeachbooks.com**Gray Whales Gallery/Gift Shop**

29830 Ellensburg Avenue, Gold Beach

541-247-7514

Rogue's Gallery

Cannery Building/Port of Gold Beach

29975 Harbor Way, Gold Beach

541-247-6158 | www.goldrushcenter.com**Rogue River Myrtlewood Gallery**

29750 Ellensburg Ave, Gold Beach

541-247-2332

South Beach Gallery and Studio Art

29095 Ellensburg Avenue, Gold Beach

541-247-2897

The Goldrush Center

29692 Ellensburg Avenue

Gold Beach, OR 97444

PORT ORFORD**Cook Gallery**

705 Oregon St, Port Orford

541-332-0045 | www.rickcookfurniture.com**Hawthorne Gallery**

517 Jefferson St, Port Orford

541-366-2266 | www.hawthornegallery.com**Johnson Gallery**

530 8th St, Port Orford

541-332-0599 | www.ejsculptor.com**Point.B Studio**

351 6th St, Port Orford

541-366-2036 | www.memory.org/point.b

Michael and Jill Lange, Owners/Principal Brokers

541-254-4088 | 541-254-4045

www.TheLangeTeam.com

COMMUNITY PARKS

BROOKINGS

Azalea Park

640 Old County Road, Brookings

Capella by the Sea

640 Old County Road, Brookings

Brookings Botanical Gardens

Hwy 101 & N Bank Chetco River Rd, Brookings

Bud Cross Park

1130 Ransom Ave, Brookings

Easy Manor Park

1025 Easy St, Brookings

Brookings Municipal Swimming Pool

1130 Ransom Ave, Brookings

Stout Park

300 Oak Street, Brookings

Bankus Fountain Pocket Park

906 Chetco Ave, Brookings

Oasis Pocket Park

706 Chetco Ave, Brookings

GOLD BEACH

Buffington Parks

94255 Caughell St, Gold Beach

The Pocket Park

29842 Ellensburg Ave, Gold Beach

South Beach Park

94080 Shirley Lane, Gold Beach



FAMILY FUN

Prehistoric Gardens & Rainforest

The Prehistoric Gardens is not a natural history museum, but with a little imagination, these beasts can come to life. They include a Tyrannosaurus Rex, Stegosaurus, and a variety of other critters of an age not our own. The self-guided tour lasts about 20 minutes. For more information visit www.prehistoricgardens.com.

Trees of Mystery

Experience the rare coastal redwoods as the SkyTrail gondola takes you on a breathtaking round-trip journey through the forest canopy or walk the trail and see the giant redwoods up close and personal. Visit www.treesofmystery.net for more information.

Ocean World Aquarium

If you're looking for an exciting family adventure, take a tour of Ocean World in Crescent City, just 30 minutes south of Brookings. Go on a guided tour where visitors can pet a variety of marine life, including sharks. Finish up the tour with Cora, the sea lion, and Skull, Marina and Wyatt, harbor seals who perform tricks. Visit www.oceanworldonline.com for more information.

Jerry's Rogue Jets

One of the best ways to experience the wild and scenic rivers of the Wild Rivers Coast is by jet boat. Fun, exciting, you'll experience zipping through the cool water on a toasty summer day with family or friends and viewing incredible scenery and iconic wildlife. Visit www.roguejets.com for more information.

West Coast Game Park Safari

Visitors mingle with free-roaming wildlife in a walk-through safari experience. Less social beasts such as bears, foxes, lions and zebras are in less accessible displays, but their youngsters are often brought out for petting sessions. Located 7 miles south of Bandon.



BEACHES & STATE PARKS IN BROOKINGS

Crissey Field Welcome Center (363)

Perched between the California border and the Winchuck River, this 40-acre park features a sandy beach, wetlands, and a small stand of mature trees. It's also home to a 4,500 sq. ft. Welcome Center that displays Oregon's finest virtues: effective green technology, a warm welcome for traveler's, plus service and beach access to area visitors and residents alike.

Winchuck River Recreation Site (362.8)

The Winchuck River Recreation Site provides a parking area and access to the Winchuck River and ocean beach for fishing, exploring, clamming, strolling, photographing seascapes and observing marine life.

McVay Rock State Recreation Site

McVay is a well-hidden park elevated above the ocean and noted for surf fishing, clamming, whale watching and plenty of space to walk on the beach. The large lawn area is great for blanket picnics and disc golf. McVay is also home to one of the only "off leash" fenced dog parks in the Brookings area.

Sporthaven Beach

At the Port of Brookings-Harbor is a favorite of local residents and is a great place to watch boat activity at the Chetco River bar. Local surfers favor ocean waves in the area of the south jetty.



BEACHES & STATE PARKS IN BROOKINGS

Mill Beach - Macklyn Cove Rd.

Tucked away in a residential area, Mill Beach offers a wide, sandy beach, tidepools and offshore rocks. The local beach offers perfect views of Chetco Point Park and Zwagg's Island. Recent improvements include a parking area, picnic tables and restroom.

Chetco Point Park – 905 Wharf St.

In an unsuspecting location behind the city wastewater treatment plant, Chetco Point Park offers some of the most breathtaking views of the Pacific. A trail leads the adventurer to a quiet beach or to the top of the bluffs overlooking the Pacific and a dog park with the best of views!

Harris Beach State Park (355.6)

Harris Beach State Park is one of southern Oregon's most pristine beaches offering long stretches of sandy beaches interspersed with rocky outcroppings, rustic bluffs, tidepools with a wide variety of marine life, and some of the most beautiful sunsets in the area. Sea stacks dot the ocean just offshore and a full hook-up campground is within a minute's walk to the water.

The park's beauty changes with each rainfall and season. Many people are drawn to the powerful and dramatic winter storms; others seek the green and fragrant spring. Wildlife viewing opportunities are abundant, with gray whales on their winter and spring migrations, Harbor seals, California sea lions, sea birds and the rich marine gardens. All-in-all making this park a fascinating stop for camping or beachcombing. The park boasts the largest island off the Oregon coast, Bird Island (aka Goat Island), which is a National Wildlife Sanctuary and breeding site for such rare birds as the tufted puffin.



BEACHES & STATE PARKS IN BROOKINGS

Rainbow Rock Beach (353.8)

Rainbow Rock Beach is north of Harris Beach and can be seen from a pull-over viewpoint just north of the "Welcome to Brookings" sign. The beach itself can be somewhat difficult to reach but is a favorite for the surfers.

Lone Ranch Beach (352.6)

One of the area's most beautiful beaches is only about 5 miles north of Brookings. Explore tidepools, look for wildlife on and offshore and, for the intrepid visitor, hike part of the Oregon Coast Trail. Offers public beach access, fire pits, picnic benches, parking and restroom and some of the best sunsets around.

With its trailhead at Lone Ranch Beach, the Cape Ferrelo Loop Trail is a one-mile loop trail which climbs the grassy slope (carpeted with wildflowers each spring) to the top of the cape for breathtaking views of the rugged coastline and photo-worthy Oregon sunsets. The cape is also an excellent spot for whale watching in the fall and spring.

House Rock Viewpoint (351.2)

The House Rock viewpoint provides views north and south along the coast and of House Rock. Featured at this overlook is a memorial plaque for Samul H Boardman, for whom the state park is named. The Oregon Coast Trail in both directions is accessible from the lookout.



BEACHES & STATE PARKS IN BROOKINGS

Whaleshead Beach (349.1)

Whaleshead Beach is a sandy, wide beach, even at high tide. It is also one of the longer beaches along the Oregon coast. Whaleshead Beach also provides some fun features for families such as tide pools, multiple shallow creeks cutting across the sandy beach, and a large cave with a “window” that frames a view of the coast to the south.

The location was given its name because of the “whale spout” that can be spotted just offshore. The largest sea stack at the beach, when hit with the right wave, will spray a large stream of misty water that resembles a whale spout.

**Indian Sands (348.6)**

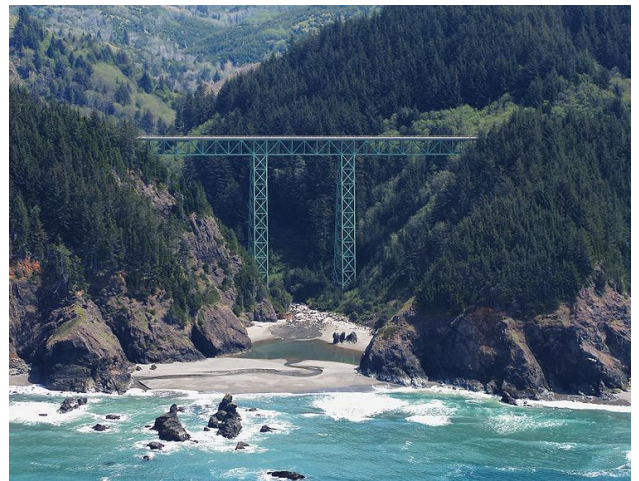
Indian Sands consists of a treeless sandstone plateau with dunes and colorful erosive formations. Although close to the water level there is no easy access as the sands are guarded by lesser cliffs still 100 feet or so high. All around are the usual sheer or steeply sloping cliffs, deep blue-green, kelp-filled water, plus a sizeable arch to the south.

**Thomas Creek Bridge (347.8)**

Constructed in 1961, the Thomas Creek Bridge is the highest bridge in Oregon at 345 feet. It is located near Cape Ferrello, between Gold Beach and Brookings.

Designed by Ivan D. Merchant, the 956-foot-long structure consists of three steel deck trusses that are supported by steel-frame towers on concrete piers.

To appreciate the structure's magnitude, pull into the parking area at the bridge's south end. Follow a short trail west for the best look at the gigantic geometric steel legs supporting the bridge.



BEACHES & STATE PARKS IN BROOKINGS

China Beach (347.4)

China Beach is a long and open beach and perhaps the least visited. Large cliffs topped with trees tower over the wide beach for much of its length. Offshore a number of sea stacks jut out of ocean, many of them resembling razor sharp teeth. The lack of visitors makes this an ideal place to comb the beaches for driftwood, shells, and other items. To observe the beach from one of the nearby cliffs, take the short walk to North Island Viewpoint. In order to enjoy the beauty and the solitude of this beach, adventurers will have to hike 1.2 miles round trip and gain a net elevation of 500 feet (mostly on the return).

**Indian Sands to China Beach Hike**

For a full day 7-mile round trip hike, park at Indian Sands and admire the remarkable rolling dunes perched high above the ocean. Head north to Thomas Creek Canyon, which plunges some 350 feet and is spanned by Thomas Creek Bridge, one of the highest bridges in Oregon. From here, take the moderately difficult trail through old growth Sitka Spruce trees with peek-a-boo ocean views on your way down to China Beach.

Secret Beach & Thunder Cove (345.8)

Secret Beach is appropriately named because of its location down steep and rough trails where it is secluded from Highway 101. Trails lead visitors to the northernmost part of the beach where a small scramble down some rocks is required to access the beach. This ocean beach has several sections to explore, each with their own unique rock formations, arches or waterfalls. The southern section can be explored at lower tides when the choke point between two large rocks is open. At very low tides further exploring can be done in the pools at the far south end of the beach.



BEACHES & STATE PARKS IN BROOKINGS

Natural Bridges (346)

Natural Bridges Viewpoint is a necessary stop if you are traveling through Samuel H. Boardman State Scenic Corridor. Within 200 feet from Highway 101 visitors will be able to witness one of nature's phenomena, natural sea arches. At this viewpoint there just happens to be two!

Arch Rock Viewpoint (344.8)

Arch Rock Viewpoint is the chief stop along a loop trail encompassing a diverse slice of the scenery in coastal southern Oregon: ocean vistas, plunging cliffs, multifarious sea stacks, and plentiful forest and greenery. Many picnic tables shaded under the coastal forest sit nearby for anyone looking to enjoy a pleasant picnic along the coast. From the parking lot a small loop trail winds around the cliff edge, providing awesome coastal views and of Arch Rock.

Hooskanaden Beach

Hooskanaden Beach presents two different beaches in one incredible and seldom-visited package, the south half a long, narrow crescent of sand, the north end, a jumble of rocks. This gorgeous beach is one of the least known on the Oregon Coast.



BEACHES & STATE PARKS IN GOLD BEACH

Cape Sebastian State Scenic Corridor

The most striking feature of this park is the panoramic view, both parking lots are over 200 feet above sea level. At the south parking vista, you can see up to 43 miles to the north with Humbug Mountain filling the view. Looking south, you can see nearly 50 miles toward Crescent City, California and Point St. George Lighthouse.

Meyers Creek Beach

Located about 16 miles north of Brookings and 14 miles south of Gold Beach, Meyers Beach is one of the most picturesque beaches in the world. Used in commercials produced by major automobile manufacturers, photographed a zillion and one times, easy to get to, and a wind surfers haunt. You are sure to enjoy time spent at Meyers Beach.

Pistol River State Park

Pistol River State Park is set in the dunes of the southern Oregon coast. The dunes and the river system that feeds them are what make this area unique. During the spring and summer months, the dunes actually grow. The river has changed its course numerous times in recent history and pothole ponds attract waterfowl and shorebirds making this is an excellent birding locale. Ocean windsurfing is so good here and has become the location for several national championships.

South Beach Park

South Beach is a small city park with handicapped beach access, BBQ and picnic area, swings and plenty of parking. Located at the south end of Gold Beach.



BEACHES & STATE PARKS IN GOLD BEACH

North and South Jetties of the Rogue River

Both areas have beach access with surfers trying their luck near the south jetty. Driftwood is also abundant here.

Beach Road

Beach Road offers multiple areas to access the beach and highlights the Port of Gold Beach memorial.

Bailey Beach

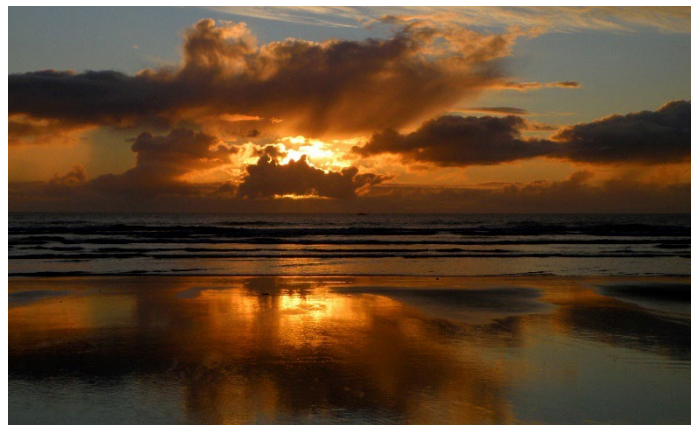
Bailey Beach, approximately 3 miles long, is located immediately north of Gold Beach. Most noted for the fact that you can drive your vehicle on it, this beach is also the closest beach to the Rogue Reef, which offers incredible views. You can walk for many enjoyable hours on Bailey Beach. In addition to the clean sand and the gentle slope of the beach, there is wonderful opportunity to hunt for driftwood, shells, and other beach valuables.

Old Coast Road

Located 5 miles north of Gold Beach, there are several areas for beach access along this stretch of one-lane road. They include Otter Point, with trails to the beach and a phenomenal view of Otter Point itself, several segments of the Coast Trail and a trail to Bailey Beach.

Nesika Beach

Nesika Beach is located north of Gold Beach, starting about 5 miles north of Gold Beach to Frankport. The easiest access point is the viewpoint that pulls off Highway 101 to the west. The air that comes off the ocean at Nesika Beach is fresh and clean and the beaches are spotless and for some strange reason uncrowded.



BEACHES & STATE PARKS NORTH OF GOLD BEACH

Arizona Beach State Recreation Site

Arizona Beach is a two-third mile stretch of sand bookended by two rocky headlands. The headlands shelter the beach from prevailing winds, creating temperatures warm enough to give the site its name.

Humbug Mountain State Park

The park and campground are dominated by Humbug Mountain (elevation 1,756 feet) and surrounded by forested hills. The campground enjoys some of the warmest weather on the Oregon coast as the surrounding mountains offer protection from cool ocean breezes. Many visitors enjoy windsurfing and scuba diving. Hiking to the top of Humbug Mountain is a major activity.

Hubbard Creek Beach

Hubbard Creek is the largest creek in Port Orford and is the source of the town's water supply. Hubbard Creek Beach, also known as Doyle's Beach (after world champion surfer, Mike Doyle), is located one mile south of Port Orford along the Oregon Coast Highway. It's a popular place for surfers but be warned that the water is quite cold!

Battlerock at the Port Orford Visitor's Center

Battle Rock Park is located along the Oregon Coast Highway in Port Orford. The beach itself is a popular destination for surfing, beachcombing, whale watching, and kayaking. The park is named after the historic battle that took place there in 1851. You can climb to the top of Battle Rock where you will get a great view of the surrounding area. This is also the site of the famous Jubilee fireworks.



BEACH COMBING & TIDE POOLING

Beach Combing

The southern Oregon coast has some of the best beach access anywhere in the world. Not only are the waves and surf a breathtaking experience, incomparable sunsets and beachcombing treasures abound. With the storms and often rainy weather, lots of different things make its way onto the coastline and beaches. Search for shells, agates, rocks and driftwood and in certain times of the year, glass floats can be found.



Oregon Tidepools



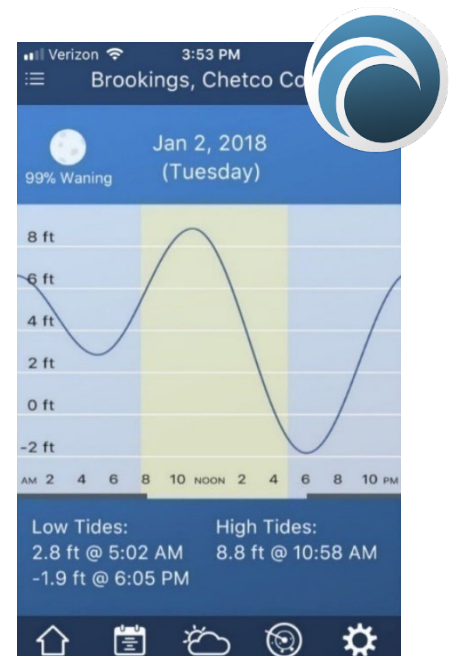
The Oregon coast tide pools are filled with curious creatures such as anemones, sea stars, crab, spiny urchin, snails, tube worms and jelly fish, to name just a few. The best tide pool viewing times are during minus tides, when the sea level dips 1 foot or more below the low tide point, exposing a world of wonder.

While it may seem fun to do so, it is best not to poke, prod, pry off, squash, collect or otherwise injure plants and animals of the rocky shore. If you want to see how something feels, it is best to first wet your hands then do so very gently.

Tide Chart App

Prior to heading out for the beach to visit the tidal life, check the tide tables. When possible, it's best to arrive an hour before low tide, as the water is still going out. Always be cautious of the waves and the tide and never turn your back on the water.

The "Tide Charts Near Me" app allows you to see the tide tables no matter where you are. In addition to worldwide tidal estimates, you can see the lunar data, weather forecast, and current radar making your next outdoor adventure as easy to plan as possible.



BIKING

The Oregon Coast Bike Route

Oregon has been supporting bicycling since 1971 by developing bikeways throughout the state. Thousands of bicyclists enjoy the natural beauty of the Oregon Coast Bike Route annually. For the most part, it follows US Highway 101 as a shoulder bikeway. In several areas, the route departs from the main highway and follows county roads and city streets. These sections are closer to the ocean, are more scenic, and have lower traffic volumes and slower traffic speeds.

Mountain Biking Trails

From rocky headlands to wide-open shores, agates, seabirds, tide pools and lighthouses in the distance, the Oregon Coast is a balm for the soul. Why ride it? Because its 363 miles of glorious coastline are full of wonder, largely car-free and accessible for us all.

Whether you plan an extended trip or one section, taking the scenic route by bike may take longer than you think, with all of the photo-worthy sea caves and arches, sea stacks, and tide pools, lighthouses, rivers, old-growth forests and more natural features to explore.



CAMPING

Harris Beach State Park Campground

Harris Beach State Park Campground's proximity to both the coastline and riverside attractions of southern Oregon is one of the reasons why it makes for a great stay. The campground itself sits above Harris Beach, which has no shortage of sea stacks, beachy real estate, and awesome tide pools, all in quick walking distance from your camping spot for the night.

Harris Beach is the state park campground that many northern Oregonians use as a measuring stick. Spend a few summer nights camped at Harris Beach and you've had a good summer. Visit www.oregonstateparks.org for more information.

**Alfred A. Loeb State Park Campground**

The Alfred A. Loeb State Park campground is nestled in a myrtle wood grove along the southwest side of the Chetco River.

Several campsites and three rental cabins face this scenic river. During the year, you can fish, swim and raft, or walk the self-guided Riverview nature trail. The river offers some of the finest fall and winter salmon and steelhead fishing on the south coast. You can plunk from the bank or try your luck on a drift boat. Throughout spring and summer, you may see scampering squirrels, soaring osprey, or a family of river otters frolicking in the water. Visit www.oregonstateparks.org for more information.



FISHING & BOATING

The southern Oregon Coast offers superb year-round ocean and seasonal river fishing. Sportsmen may try their hand at bottom fishing (lingcod, rock cod, Pacific snapper) or go after salmon, halibut, albacore, red tail perch, Dungeness crab or shark. For the more laid-back, fishing from shore is another option. River fishing is also a popular pastime in and around Brookings.

The Port of Brookings-Harbor has one of the safest entries to the Pacific Ocean on the West Coast. The working port caters to sport fishermen, sailors, pleasure boaters, and a fleet of commercial fishing vessels. But you don't have to bring your own boat to get on the waters. Numerous ocean-going boat guide services are available for charter.



FISHING GUIDES & CHARTER SERVICES

Allen's Guide Service – 541-247-2082

Brookings Fishing Charters – 541-813-1082

Brookings Fishing – 541-698-7029

Bowman's Guide Service – 541-373-1647

Bruce Caviotto's Guide – 541-913-3759

Bud's Guide Service – 541-373-3864

Cast Guide Services – 541-698-7029

Charthouse Sportfishing – 541-251-1943

Chris Young Guide Service – 541-247-8115

Denny Hughson's Guide – 541-698-7395

Early Fishing – 541-469-0525

End of the Rogue Guide – 541-247-2049

Ernie Rutledge – 541-247-6111

Fish Hawk River Company – 541-469-2422

Fish Oregon – 541--347-6338

Five Star Charters – 541-247-0217

Freeland Julie – 541-251-3596

Gold River Guides – 541-661-0398

Greg Eide – 541-247-2608

Helen's Guide Service – 541-290-8402

Jack Hunt – 541-247-6198

John Carl's Guide Service – 541-247-6400

Jot's Resort – 541-247-6676

Lex's Landing – 541-247-0909

Mark Van Hook Guide – 541-247-6702

Memory Makers – 541-425-1515

Oregon Fishing Adventure – 907-947-3349

Rogue River Guide Service – 541-247-4025

Ross Bell – 541-247-2149

Terry Kennedy Fishing Guide – 541-247-9219

Tidewind Sportsfishing – 541-469-0337

Tyson Crumley Guide Service – 541-698-8338

Ultimate Catch Charter – 541-813-0330

Wild Rivers Fishing – 541-813-1082

Wilderness Canyon Adventures – 541-698-7439



GOLFING

Salmon Run Golf Course

Salmon Run Golf Course is a championship course designed as much by nature as by man. Where enthusiasts and purists alike will find a challenge for every club in their bag. A course that carries you along the path of spawning Chinook – and carries your game to a whole new level. Embrace the challenge and nature's splendor. Located at 99040 S. Bank Chetco River Road, Brookings. Visit www.salmonrun.net for more information.

**Cedar Bend Golf Course**

The nicely manicured 9-hole course crosses Cedar Creek several times and features fairly wide, flat fairways, an anomaly for most coastal valley courses. Located at 34391 Squaw Valley Road, Gold Beach. Visit www.cedarbendgolf.com for more information.

Bandon Dunes Golf Course

At Bandon Dunes Golf Resort, you'll find five distinctly different courses built on a beautiful stretch of sand dunes perched 100 feet above the Pacific Ocean. Bandon Dunes and Pacific Dunes feature a dozen holes that run along the bluff overlooking 23 miles of sweeping, undisturbed shoreline. Located at 57744 Round Lake Drive, Bandon. Visit www.bandondunesgolf.com for more information.



HIKING AND WALKING TRAILS

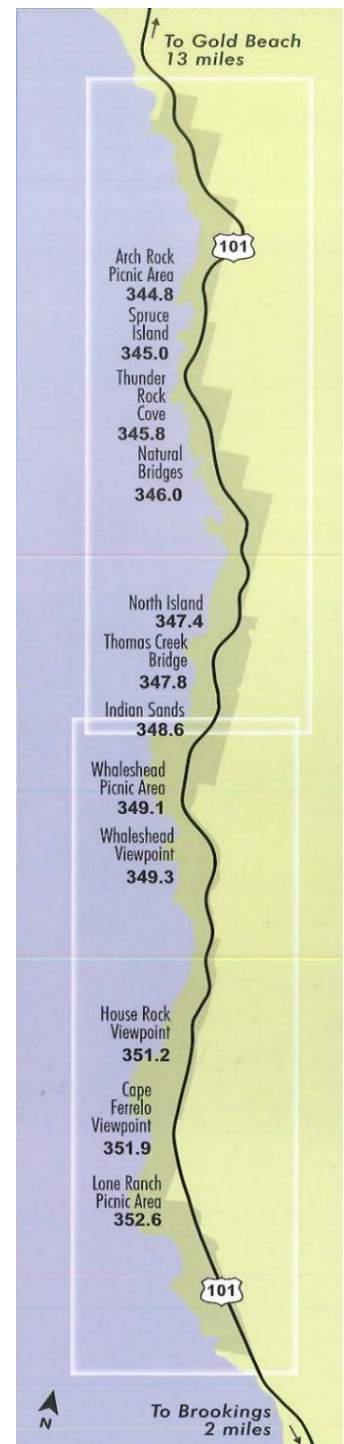
Samuel H. Boardman State Scenic Corridor (Mile Markers 353.8 – 344.6)

Craggy bluffs, secluded beaches, and offshore rock formations await visitors along the 18 ocean-hugging miles of Samuel H. Boardman State Scenic Corridor, located between Brookings and Gold Beach along Highway 101.

Come for a picnic and watch the waves crash from the easily accessible viewpoints, or take one of the corridor's many hikes, ranging from an easy ¼ mile to all 18 miles. Bring your binoculars, as the park lies in the Pacific Flyway, a bird migration route linking summer breeding grounds and warmer wintering grounds. Likewise, the park's many viewpoints are perfect for spotting grey whales migrating between Mexico and Alaska.

Boardman's beaches, bluffs, and trails make up one of the most secluded and picturesque sections of the Oregon Coast Trail that spans the entire 362-mile coastline, from the California border to the mouth of the Columbia River.

The park was named in honor of Samuel H. Boardman, the first Oregon Parks superintendent. He and others of his generation felt this shining coastline should be saved for the public. What gems they gave us: admire the 300-year old Sitka Spruce trees, gaze at the amazing Arch Rock and Natural Bridges, and walk the 27 miles of Oregon Coast Trail that weave through the giant forests.



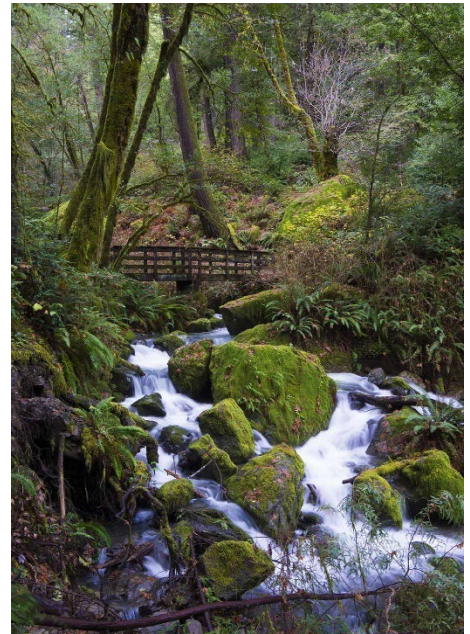
HIKING & WALKING TRAILS

The Oregon Coast Trail

The majesty of Oregon's coastline unfolds around every bend along the 383-mile Coast Trail. Hikers cross sandy beaches, meander through forest-shaded corridors and traverse majestic headlands. Most of the route is on the beach, although some segments wind through state parks or public lands. Visit www.oregon.gov for more information.

The Redwood Nature Trail

The northernmost naturally growing redwoods are on a hillside above the Chetco River near Alfred A. Loeb State Park. Just 8 miles from Highway 101, visitors are immediately met with a photo-worthy waterfall and bridge. The one-mile trail



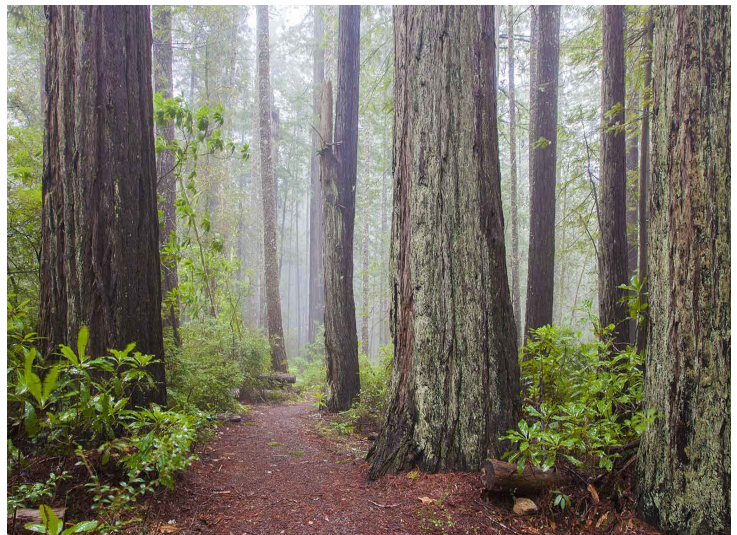
climbs just 290 feet and crosses several bridges while meandering through a grove of lush mixed forest of redwoods and Douglas Fir. If you're not up to the hike, be sure to stop and see the waterfall. Visit www.redwoodhikes.com/oregon for more information.

The Oregon Redwoods Trail

The Oregon Redwood Trail is a short loop through a mixed-species upland forest that includes some small old-growth redwoods. The trail is one of only two old-growth redwood groves in Oregon.

Jedediah Smith Redwoods State Park

Just a few miles to the south across the Oregon/California border is the Jedediah Smith Redwoods State Park. The park is filled with trees of truly stupendous size and somewhere in the park is the largest coast redwood by volume, a tree that's exceeded in size by only seven giant sequoias.



HORSE BACK RIDING

The forest covered hills, open meadows sandy dunes and rock-strewn shores provide the perfect setting for an adventure on horseback. Whether you are a complete beginner, an experienced rider, or anywhere in between, there is an exciting adventure awaiting you.

Hawk's Rest Ranch

Hawk's Rest Ranch is a 200-acre ranch situated in the Pistol River Valley about 20 miles north of Brookings. They offer trail rides past open meadows, through the woods, past bubbling brooks and along the Oregon coastline. Call 541-247-6423 for more information.

Crescent Trail Rides

If you've always wanted to ride on horseback through majestic redwoods or along one of California's pristine beaches, here's your chance. Crescent Trail Rides, just 30 minutes south of Brookings, offers guided horseback rides in the Tolowa Dunes State Park and the Mill Creek area of the Redwood National and State Parks. Visit www.crescenttrailrides.com for more information.



LIGHTHOUSES

In 1857, the first federal lighthouse on the Oregon coast lit up. Today, eleven lighthouses remain along the coast. Some are public, others private. Together they represent a crucial element of Oregon's maritime past, when a lighthouse could mean the difference between safe passage and disaster. The importance of lighthouses for ships has faded in the 21st century, but they're still strong beacons for visitors by land.

Pelican Bay Lighthouse, Brookings

Oregon's newest lighthouse, Pelican Bay was first lit in 1999, becoming the second private lighthouse in Oregon to be officially commissioned by the U.S. Coast Guard. Located on a cliff above Brookings, it's also the southernmost lighthouse on the coast. You can find it near Brookings-Harbor, where the lighthouse is visible on a hill south above the Harbor. * Fun Fact: South Coast Real Estate sold this iconic home in 2023!



Pelican Bay Lighthouse

Battery Point & St. George Reef Lighthouses, Crescent City

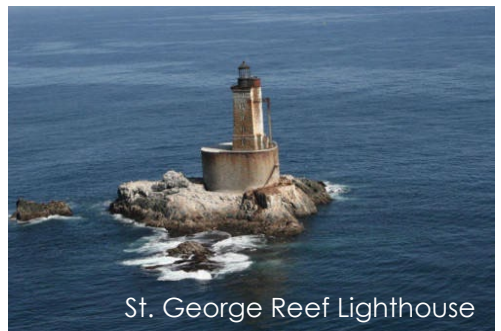
Near the Oregon border in Crescent City, is Battery Point Light which is now being operated as a museum.

Accessible by foot only at low tide, Battery Point is fun to visit as visitors can go inside the lighthouse and walk the island and tide pools.



Battery Point Lighthouse

The St. George Reef Light is an inactive lighthouse built on Northwest Seal Rock, six miles off the coast near Crescent City. On a clear day, the lighthouse can be seen off the Oregon coastline and when weather permits, a tour can be taken with a helicopter ride to the island. For more information, visit www.StGeorgeReefLighthouse.us.



St. George Reef Lighthouse

Cape Blanco Lighthouse, Port Orford

Climb the winding stairway to the top of Cape Blanco Lighthouse and stand beside its spectacular Fresnel lens. Beyond the windows your gaze is drawn to the magnificent ever-changing Pacific coastline. Erected in 1870, this lighthouse stands on Oregon's farthest west point of land and is the oldest one continually operating in Oregon.



Cape Blanco Lighthouse



MUSEUMS

Stop by the Chetco Valley Historical Society Museum and you may find yourself immersed in the area's history. The museum is nestled in the shade of several old trees, including Monterey Cypress – the largest in the state, and an Oregon Heritage tree.

BROOKINGS

Chetco Valley Historical Society Museum

15461 Museum Road

Brookings, OR 97415

541-469-6651 | www.chetcomuseum.org



GOLD BEACH

Curry Historical Society Museum

Alice Wakeman Building

29419 Ellensburg

Gold Beach, OR 97444

541-247-9396 | www.curryhistory.com



Jerry's Rogue River Museum

29985 Harbor Way

Gold Beach, OR 97444

800-451-3645 | www.roguejets.com

AGNESS

Agness-Illahe Museum

34470 Agness-Illahe Road

Agness, OR 97406

541-247-2014 | <http://www.curryhistory.com>

PORT ORFORD

Cape Blanco Heritage Society

P.O. Box 1132

Port Orford, OR 97465

541-332-0521

www.capeblancoheritagesociety.com



Michael and Jill Lange, Owners/Principal Brokers

541-254-4088 | 541-254-4045

www.TheLangeTeam.com

MUSIC

When you think of Oregon, images of trees, waterfalls and lots of greenery probably come to mind. You may also think about the flourishing culinary scene or tax-free shopping but what some don't realize, one can find live music to listen to almost every day of the week. Below is a list of a few festivals and venues.

American Music Festival (AMF) Summer Concerts in the Park

Held at the Azalea Park Bandshell typically every other Sunday from June through September. Pop, country, rock, big band, bluegrass, folk, Celtic, swing, jazz or zydeco, there is something for everyone! Concert goers are welcome to bring their lawn chairs and blankets, spread out on the lawn with a picnic lunch or grab a meal at the snack shack.

Friends of Music

PO Box 7893
Brookings, OR 97415
541-469-7625 | 541-469-3473
www.brookingsharborfriendsofmusic.com

Stagelights Musical Arts Community

541-373-3727 | www.stagelights.us

Pistol River Concert Association

Pistol River Friendship Hall
24252 Carpenterville Road
Pistol River, OR
541-247-2848 | www.PistolRiver.com

**LOCAL VENUES**

Check local listings for the dates, times and more information:

Catalyst Seafood Lounge

16273 Lower Harbor Road

Chetco Activity Center

550 Chetco Lane

Khun Thai

925 Chetco Ave

Nesika Beach Grange Hall

33043 Nesika Road, Nesika Beach

Oxenfre' Public House

631 Chetco Ave

Snug Studio – Brian Scott Gallery

515 Chetco Ave

Chetco Brewing Tap House

830 Railroad Street

Zola's On The Water

16374 Lower harbor Road



PADDLE SPORTS

Kayaking, Canoeing, River Rafting & Paddle Boarding

Go fishing, wildlife viewing or just simply enjoy the experience of gliding across the waterways of the banana belt coast of Oregon. The south coast holds much of Oregon's near shore reefs and some of the best fishing, photography, wildlife viewing and wildest rivers on the west coast.

Some may say kayaking is one of the biggest rushes you can have on the water, letting you play in the river rapids, waterfall and even the sea. It's also a great way to get up close to nature and see the world around you from a brand-new point of view, paddling silently through remote areas that most people will never get to visit.

Paddle out to explore Oregon's wilderness with a voyage to one of the many watersheds in the Brookings-Harbor area. See the region's lively creatures in their lush and wooded habitat on an excursion that takes you to see animals of all species in some of the cleanest water along the coast.



RECREATIONAL RENTALS & GUIDED TOURS

Chetco Outdoor Store

16220 W Hoffeldt Lane, Harbor
541-469-9151

Oregon Bikes Rentals

97993 Lively Lane
541-661-5484

Riverside Market

98877 N Bank Chetco River Road
541-661-3213

Rogue Outdoor Store

29865 Ellensburg Ave, Gold Beach
541-247-7142

South Coast Tours

300 Dock Road, Port Orford
541-373-0487

Smith River Kayaks

12580 Hwy 101, Smith River, CA
707-328-2022



RIVERS

Whether for fishing, bird watching, hiking, picnicking, rafting, kayaking, or just throwing a stick for the dog – people are drawn to Oregon's rivers and streams. The southern Oregon rivers supports chinook and Coho salmon, steelhead, and sea-run coastal cutthroat trout.

Chetco River

The 56-mile Chetco River flows through a rugged and isolated coastal region and descends about 3,200 where it empties into the Pacific Ocean between Brookings and Harbor 6 miles north of the California state line.

Winchuck River

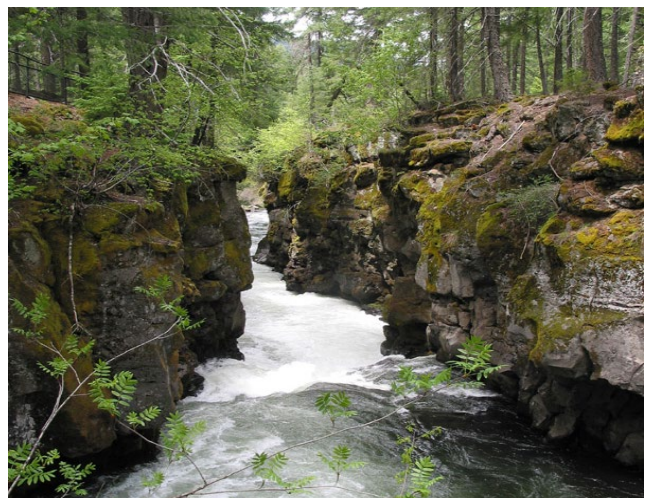
The Winchuck River is a short 10-mile coastal river that runs through the Rogue River–Siskiyou National Forest to the Pacific Ocean. The river enters the Pacific at Crissey Field State Recreation site, about half mile north of the Oregon–California border and about 5 miles south of Brookings.

Rogue River

The Rogue River flows about 215 miles beginning at the Cascade Range and entering the ocean in Gold Beach. Known for its salmon runs, whitewater rafting, and rugged scenery, it was one of the original eight rivers named in the Wild and Scenic Rivers Act of 1968.

Elk & Sixes Rivers

The Elk and Sixes are sister streams that flow so closely together, it would be hard not to mention one without the other. The Elk River empties into the Pacific south of Cape Blanco, while Sixes flows into the ocean just a few miles north of Cape Blanco. Both rivers are known for having some of the latest runs of salmon on the Oregon Coast.



SURFING

Surfing, Kite Surfing, Wind Surfing

Despite the growing popularity of surfing worldwide, the southern Oregon coastal shores remain relatively undiscovered by thrill-seekers.

With breaks for all levels of surfers, from the north to the south, there are plenty of places to put your board in the water and feel the energy of the Pacific Ocean for yourself. Whether you're just starting out or you've been in the water for years, there's something for everyone here.

Pistol River Wave Bash

Every June some of the world's best windsurfers come to Gold Beach for a high-powered tournament known as the Pistol River Wave Bash, a major event on the American Windsurfing Tour (AWT). It's held in the surf off Meyers Beach in Pistol River State Park, just north of Brookings. The naturally occurring combination of wind and surf here makes this area one of the world's premier locations for this unbelievably exciting sport, and the dazzling natural beauty of the surroundings makes it absolutely perfect. The event attracts champions from all over the U.S., the South Pacific, South America, Europe and the rest of the world.



WILDLIFE VIEWING

Wildlife Viewing

Some of Oregon's largest mammals, both onshore and off, can be viewed off the southern Oregon Coast. Roosevelt elk and Blacktail deer graze in nearby pastures, while Harbor Seals and California Sea Lions bob their heads in the rolling tide and lounge on the rocks offshore.

Whale Watching

Whale watching is a year-round activity on the Oregon Coast with gray whales by far the most commonly seen. Gray whales migrate south from their feeding grounds near Alaska from mid-December through January. They head to their breeding grounds in Baja California, Mexico, where warm-water lagoons become nurseries for expectant mothers. Then from late March to June the whales migrate north back to Alaska. On each trip, approximately 18,000 gray whales pass close to the Oregon Coast. About 200 gray whales do not continue on to Alaskan waters but stay off the coast of Oregon between June and November.

Seals & Sea Lions

Seals and sea lions can be spotted at the various ports along the coast and often sun themselves on the docks and swim among the boats at the ports of Brookings-Harbor. In Gold Beach, seals and sea lions can be seen surfing the waves at the mouth of the Rogue River.

Bird Watching

Because the Oregon Coast is located within Pacific Flyway, hundreds of migrating birds may be viewed all year round. Boasting the largest island off the Oregon Coast, Bird (or Goat) Island in Harris Beach State Park, offers opportunities to see a variety of birds. The island hosts more than 109,000 nesting seabirds comprising 11 species.





REAL ESTATE SERVICES

Southern Oregon Coast



MICHAEL AND JILL LANGE, BROKERS/REALTORS®

Michael and Jill Lange believe that honesty, integrity and communication are the keys to any successful business relationship. Where else can this be more important than in a real estate transaction? After all, it may likely be one of the largest purchases of your life.

Married for 36 years, Michael and Jill make up the dynamic real estate brokerage team known as The Lange Team. Their knowledge of the real estate industry and marketing is invaluable, and because the world of real estate is becoming more sophisticated with new challenges every day, you need a professional team that understands the business and will represent you with the highest level of knowledge and integrity.

For the seller, they are constantly researching the market trends and property values, so your home is priced effectively from day one. Your home will gain maximum exposure by using innovative advertising and marketing techniques to attract qualified buyers.

For the buyer, they bring creative negotiating skills to every transaction, defining the difference between a good offer and a great offer and the strong ability to negotiate is critical in today's challenging market.



The Lange Team's extensive experience as business owners/managers, general contractors, and with marketing and sales experience, have paved the path for them to be the experts required in real estate brokers. Their accessibility and responsiveness to clients, colleagues, and associates results in repeat clients and a network of resources all of whom benefit from the interaction.

In addition to being skilled REALTORS®, they have tremendous knowledge and appreciation for the unique qualities and beauties of Brookings, Harbor, Gold Beach, and all of the Southern Oregon Coast.

Whether you are considering a move to the southern Oregon coast, or are a tried and true local, or even an investor, you need trustworthy Brokers who know the real estate market and the area and all it has to offer. You need Brokers who will become your "partners" in your real estate needs. Look no further! You've found them!



CONSIDERING A MOVE TO THE SOUTHERN OREGON COAST?

Moving to a new area can be an exciting experience but can also present a number of challenges. There is no doubt you will have many questions about your move and the Brokers on The Lange Team will be there, on your behalf, to make it a pleasant and informative experience. We are dedicated to meeting the needs of home buyers and sellers beginning with the initial consultation and ending with a successful move or sale.

Professional Assistance

You may feel slightly better to know that we make it our business to alleviate fears, to ease the stress of the relocation process, and to smooth the transition to a new home. You don't have to lose any sleep over finding the right home in your new community. We are trained at helping individuals and families find new homes in the best location at the best possible price.

Area Tour

When moving to another state, sometimes you don't know enough about the city, neighborhoods, schools, and commute times to make a wise purchase decision. We are happy to spend the time showing you the area, giving a little area history, helping to orient where you will be working, viewing homes in different areas of interest and taking the time to make sure you are comfortable with your move.



Home Sale Assistance

If you are relocating out of southern Oregon area and need to sell your home, we have the resources you need for maximum exposure of your home to potential Buyers. We provide a free comprehensive BMA (Broker Market Analysis) of your home and give advice on preparing your home for the best showing potential.

Mortgage Assistance

We have partnered with lenders who offer several loan programs to create a personal program to meet your specific needs.

Relocation Concerns? They're Only Natural.

Make no mistake, relocating is a huge undertaking, and you will have several big questions and concerns and we are ready to assist in any way possible.



INVESTING IN REAL ESTATE

Investing in real estate may likely be one of the biggest purchases your family will ever make, and it involves many decisions that go beyond simply choosing the home you like. The financial and emotional stakes are high, but the rewards can make it all worth it. Plain and simple, owning a home can improve your quality of life, provide stability and give you a sense of control you just can't get from renting.

The Value of a Buyer's Agent

Buying a home can be a lengthy process and an experienced buyer's agent can guide you through the steps, answer your questions, and serve as your advocate. The Lange Team will assist you in finding the property that fits your needs, negotiate the best price possible, take care of all the paperwork, and provide a number of additional relevant services.



You can count on Michael and Jill Lange to assist with the entire home buying process, making sure the final results are in your best interest.

SELLING REAL ESTATE

Sound Pricing Strategies

Smart, competitive pricing is essential. We are constantly researching the market trends and property values so your home is priced effectively from day one.

Dominant Marketing Exposure

Your home will gain maximum exposure by using innovative advertising and marketing techniques as well as the power behind the South Coast Real Estate brand to attract qualified buyers.

Doing More From “FOR SALE” to “SOLD”

The Lange Team understands how to accurately market your home and make it stand out in the market. We have access to a vast referral network, enabling us to connect with potential buyers across town or around the globe.

Experience You Can Trust

Michael and Jill's knowledge, experience and marketing efforts, result in a FAST sale at TOP dollar.



The information in this Resource Guide has been provided by Jill and Michael Lange of The Lange Team. Feel free to reach out with any questions; we are here to work for you.

Michael and Jill Lange, Owners/Principal Brokers/REALTORS®

Jill Lange | 541-254-4045 | Jill@TheLangeTeam.com

Michael Lange | 541-254-4088 | Michael@TheLangeTeam.com

THE LANGE TEAM | SOUTH COAST REAL ESTATE

Located at the north end of Brookings near the Harris Beach State Park and Campground, on the corner of Hwy 101 and Easy Street.

Physical Address:

1310 Easy Street (Hwy 101 & Easy)
Brookings, OR 97415

Mailing Address:

P.O. Box 7283
Brookings, OR 97415

Learn More:

SouthCoastRE.com

TheLangeTeam.com

Facebook.com/thelangeteam

Youtube.com/thelangeteam



**IT'S JUST
OREGON.
NO BIG DEAL.**



